

**ALARUM Vanity**  
**3-597-xx**

oxygen

FIXTURE TYPE \_\_\_\_\_

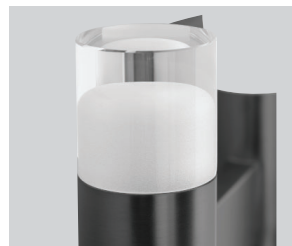
LOCATION \_\_\_\_\_

PROJECT \_\_\_\_\_

DATE \_\_\_\_\_



-15 Black

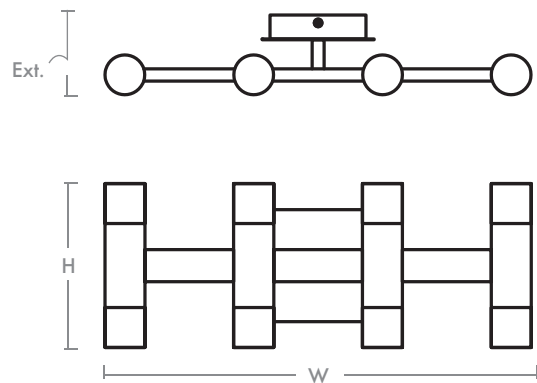


-15 Black



-24 SN

<b>LIGHT SOURCE</b>	(8x) 3.5W LED Array, 3000K, 90 CRI (Ra)
<b>LUMINAIRE POWER</b>	29.20W
<b>RATED LIFE (L70)</b>	50000 hr RL
<b>OPTIONAL COLOR TEMPERATURES</b>	3000K
<b>LUMEN OUTPUT</b>	1471.3 Lm (LM-79)
<b>INPUT VOLTAGE</b>	120V
<b>DRIVER OUTPUT</b>	700 mA, 33W max.
<b>DIMMING</b>	TRIAC and ELV dimming at 120V AC
<b>CONSTRUCTION</b>	Painted Black Steel, Nickel Plated Steel
<b>DIFFUSER</b>	- Clear/Frost K9 crystal diffusers
<b>FINISHES</b>	-15 Black, -24 SN, -40 AGB
<b>MOUNTING</b>	4† Octagonal J-Box
<b>STANDARD</b>	cUL Damp Listed, ADA Compliant, Conforms to UL STD 1598, Certi- ed CAN/CSA STD C22.2 No 250.0.



**DIMENSIONS**

<b>W:</b>	21†
<b>H:</b>	8†
<b>Ext:</b>	4†
<b>M.C:</b>	4† From top of -xture

Order example for standard -xture:  
**3-597-15** (x-xxx: LED Sequence # / -xx: Finish)

