

# DF G2

## LED Ultra-Thin Recessed Downlight **CONTRACTOR XP**

Due to continuous product improvements, specification and/or equipment updates may change without notice.



**DF G2 - Square and Round trim Downlights**

**Driver**

(Images are shown for illustration purposes only)

A popular downlight for residential lighting, the **DF G2** LED downlight series, is a great option when installation space is tight. The driver/junction box makes for a quick and mess-free installation and the clip-in, can-less housing is ideal for low-plenum applications. The quick-disconnect design is a go-to in this market and with SLG Lighting you get our full, customer-service first back up - ensuring NO unhappy customers.

Catalog Number	Description	Lumens	Watts	CCT	Voltage
DF 4R 7 G2 9FSK	LED Recessed Downlight, Gen 2, 4in Round, 9 Watt, 650 Lumens, Selectable CCT, 90 CRI, 120VAC, Triac Dimming, White Rim	650 Lm	9 W	Switch Selectable 2700K - 5000K	120V
DF 6R 9 G2 9FSK	LED Recessed Downlight, Gen 2, 6in Round, 12 Watt, 900 Lumens, Selectable CCT, 90 CRI, 120VAC, Triac Dimming, White Rim	900 Lm	12 W	Switch Selectable 2700K - 5000K	120V
DF 8R 15 G2 9FSK	LED Recessed Downlight, Gen 2, 8in Round, 18 Watt, 1,500 Lumens, Selectable CCT, 90 CRI, 120VAC, Triac Dimming, White Rim	1,500 Lm	18 W	Switch Selectable 2700K - 5000K	120V
DF 4S 7 G2 9FSK	LED Recessed Downlight, Gen 2, 4in Square, 9 Watt, 600 Lumens, Selectable CCT, 90 CRI, 120VAC, Triac Dimming, White Rim	600 Lm	9 W	Switch Selectable 2700K - 5000K	120V
DF 6S 9 G2 9FSK	LED Recessed Downlight, Gen 2, 6in Square, 12 Watt, 850 Lumens, Selectable CCT, 90 CRI, 120VAC, Triac Dimming, White Rim	850 Lm	12 W	Switch Selectable 2700K - 5000K	120V

### ORDERING GUIDE

Example: **DF 6R 9 G2 9FSK**

Fixture Type	Size	Lumen Output	Generation	Voltage	Adjustable CCT	Finish	Emergency Backup (Optional)	Accessories
• DFLED Ultra-Thin Recessed Downlight	• 4R 4" Round	• 7 650 Lm / 9 W	• G2 Second Generation	• BLANK 120 Vac	• 9FSK 2700K - 5000K	• BLANK White	• EMA-DH20T-UNV-110 Emergency Backup	• BLANK None • DE 3/4/6/8/10R HOUSING New Construction Universal Housing for 4", 6", 8", and 10" Round Downlights • DE 4/6/8S HOUSING New Construction Univesal Housing compatible with 4"/6"/8" Square Downlight
	• 4S 4" Square							
	• 6R 6" Round	• 9 900 Lm / 12 W						
	• 6S 6" Square							
	• 8R 8" Round	• 15 1,500 Lm / 18 W						

## Performance Information

Series Number	Lumens	Wattage	Efficacy	CCT
DF 4X 7	600 Lm	9 W	67 Lm/W	2700K/3000K/3500K 4000K/5000K
DF 6X 9	900 Lm	12 W	75 Lm/W	
DF 8R 15	1,500 Lm	18 W	83 Lm/W	

## Specifications

### Housing and Lens

Die-cast aluminum flange and metal cover.  
110° beam angle

### Ambient Temperature

Suitable for use in -25° C to 40° C (-13° F to 104° F).

### Mounting

Recessed ceiling mounting.

### Efficacy

Up to 83 lumens per watt.

### CCT and CRI

Switch selectable 2700K - 5000K, 90CRI

### Lumen Output

LS7: 650Lm / 9W (Round) 600 Lm / 9W (Square)  
LS9: 900Lm / 12W (Round) 850 Lm / 9W (Square)  
LS15: 1,500 Lm / 18 W

### Warranty

5-year limited warranty. Comprehensive warranty terms can be located on [www.slgus.com](http://www.slgus.com).

### Electrical

120Vac. TRIAC dimming. 10-100% Smooth dimming.  
Power factor > 0.9 THD < 20%  
L70 Calculated life > 50K hours  
Low noise < 24dB

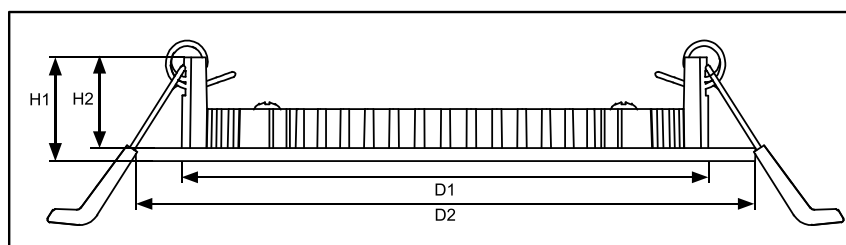
### Certifications

UL Listed for Wet Locations (non-conductive trim). FCC compliant.  
Energy Star Listed. ETL Listed. A Title 24 Compliant: JA8-2022(-E).

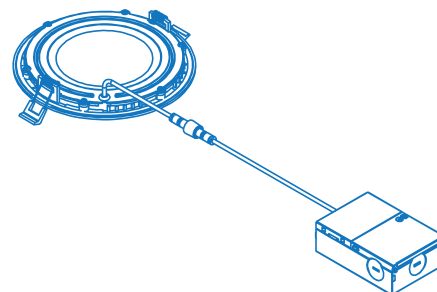
### IC Rated

Suitable for direct contact with insulation. Type IC inherently protected, suitable for direct contact to air permeable insulation and cULus listed damp locations. Not for use in direct contact with spray foam insulation, consult NEMA LSD57-2013.

## Dimensions

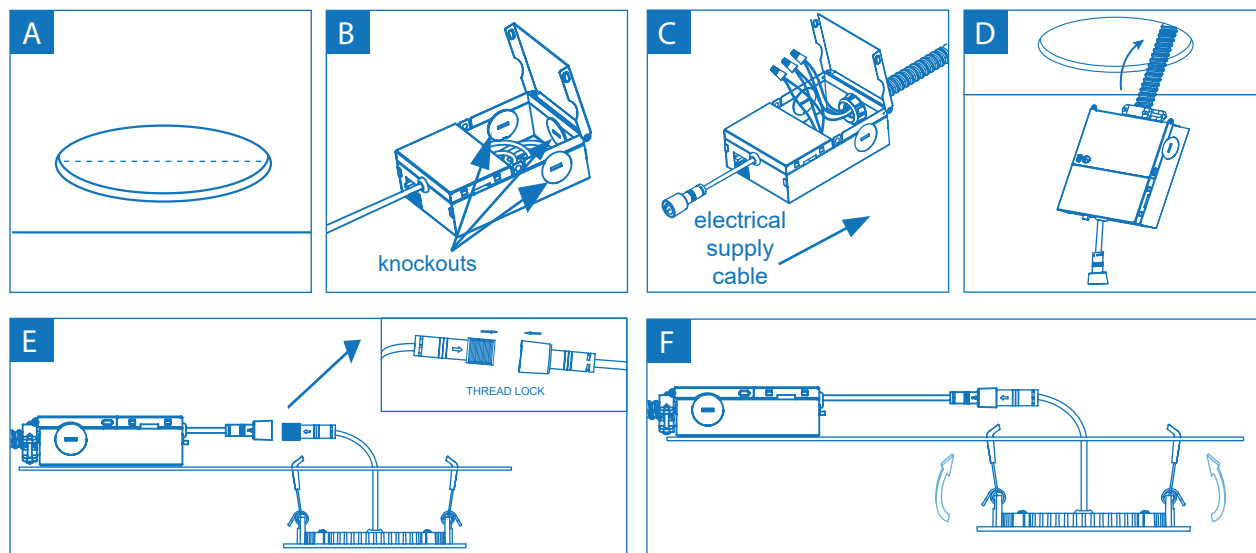


Model No.	Size	D1	D2	H1	H2	Cut-Out
DF 4R 7 G2 9FSK	4"	4.21"	4.72"	0.81"	0.71"	ø 4.33"
DF 6R 9 G2 9FSK	6"	6.10"	6.69"	0.81"	0.71"	ø 6.30"
DF 8R 15 G2 9FSK	8"	8.03"	8.86"	0.81"	0.71"	ø 8.27"
DF 4S 7 G2 9FSK	4"	2.46"	4.6"	0.94"	0.86"	ø 4.33"
DF 6S 9 G2 9FSK	6"	3.62"	6.75"	0.94"	0.86"	ø 6.30"



JBOX	4"	6"	8"
Length	4.17"	4.17"	4.96"
Width	2.66"	2.66"	2.82"
Height	1.36"	1.36"	1.36"

## Installation



## Emergency Backup



### SPECIFICATIONS

Input Voltage	100-277V AC,50/60Hz	Output Voltage	110V AC
Input Current(Max.)	100mA	Warranty	5 Years
Input Power(Max.)	7W	Output Power	20W
Emergency Time	90 minutes	Battery Type	Lithium
Charging Time	≥24 hours	Ambient Temp	5°C~50°C (41°F~122°F)

## Compatible Dimmers

No.	Brand	Model No.	No.	Brand	Model No.
1	LUTRON	SCL-153P	12	LUTRON	DV-603PG
2	LEVITON	663-P	13	LUTRON	TTCL-100H
3	LUTRON	6683	14	LUTRON	DV-600P
4	LEVITON	6684	15	LUTRON	AYCL-153P
5	LUTRON	IP106	16	LUTRON	DVCL-153PL
6	LEVITON	6672	17	LEGRAND	CDLV703-PW
7	LUTRON	6613-P	18	LEGRAND	D703-PTC
8	LEVITON	SCL-153P	19	LEGRAND	DLV703-PLA
9	LUTRON	AY-600P	20	LEGRAND	H703PTCCCV6
10	LUTRON	D-603PH	21	COOPER	DLC03P
11	LUTRON	LGCL-153PL	22	COOPER	9530WS