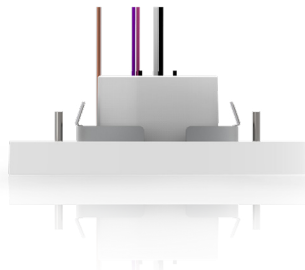


DS G2

LED SurfaceSlice Downlight **CONTRACTOR XP**

Due to continuous product improvements, specification and/or equipment updates may change without notice.



DS - 5"
 5" Round - J-Box Installation - Smooth



DS - 7"
 7" Round - J-Box Installation - Cool

Catalog

(Images are shown for illustration purposes only)

Catalog Number	Description	Lumens	Watts	CCT	Voltage
DS 5R LS10 G2 9FSK	DS Surface Slice Downlight, 5IN Round, 120VAC, Gen2, CRI 90, Field Selectable CCT, Triac Dimming, White Rim	Selectable 650 - 1,000 Lm	Selectable 7 - 13 W	Selectable 2700K - 5000K	120V
DS 7R LS14 G2 9FSK	DS Surface Slice Downlight, 7IN Round, 120VAC, Gen2, CRI 90, Field Selectable CCT, Triac Dimming, White Rim	Selectable 800 - 1,350 Lm	Selectable 8 - 15 W	Selectable 2700K - 5000K	120V
DS 5R LS10 G2 UNV 9FSK	DS Surface Slice Downlight, 5IN Round, 120-277VAC, Gen2, CRI 90, Field Selectable CCT, 0-10V Dimming, White Rim	Selectable 650 - 1,000 Lm	Selectable 7 - 13 W	Selectable 2700K - 5000K	120V - 277V
DS 7R LS14 G2 UNV 9FSK	DS Surface Slice Downlight, 7IN Round, 120-277VAC, Gen2, CRI 90, Field Selectable CCT, 0-10V Dimming, White Rim	Selectable 800 - 1,350 Lm	Selectable 8 - 15 W	Selectable 2700K - 5000K	120V - 277V

ORDERING GUIDE							Example: DS 7R LS14 G2 9FSK
Fixture Type	Size & Shape	Selectable Lumen Output	Generation	Dimming	Selectable CCT & CRI	Finish	
• DS SurfaceSlice Downlight	• 5R 5in Round	• LS10 650 Lm / 7 W 850 Lm / 9 W 1,000 Lm / 13 W	• G2 Second Generation	• BLANK TRIAC Dimming - 120VAC • UNV 0-10V Dimming - 120-277 VAC	• 9FSK 2700K 3000K 3500K 4000K 5000K 90 CRI	• BLANK White Trim	
	• 7R 7in Round	• LS14 800 Lm / 8 W 1,100 Lm / 11 W 1,350 Lm / 15 W					

Specifications

Housing

PC high strength plastic housing.

Ambient Temperature

Suitable for use in -25° C to 40° C (-13° F to 104° F).

Mounting

Surface mount.

Efficacy

Up to 100 lumens per watt.

CCT and CRI

Field selectable: 2700K, 3000K, 3500K, 4000K, and 5000K.
CRI 90.

Lumen Output

5in Round: 650 - 1,000 Lm.

7in Round: 800 - 1,350 Lm.

Optics

110° Beam angle.

Electrical

PF > 0.9 | Low noise < 22dB

Flicker <30% to meet CEC Title 24/JA8

Lifespan

L70 > 75,000 hours @ 25° C.

Wattage

5in Round: Field selectable: 7 - 13 Watts.

7in Round: Field selectable: 8 - 15 Watts.

Warranty

5-year limited warranty. Comprehensive warranty terms can be located on www.slgus.com.

Dimming

TRIAC Dimming - 120Vac.

0-10V Dimming - 120-277 Vac

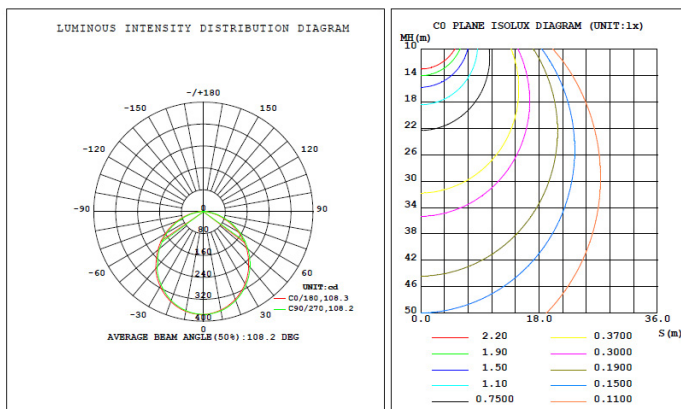
Certifications

ETL Listed. Wet location certified (non-conductive trim). FCC compliant. Energy Star Listed. Title 24 Compliant: JA8-2022 (-E).

Photometric

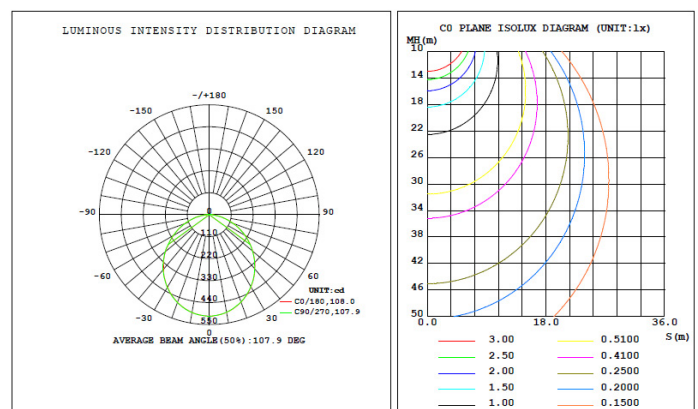
DS 5R G2 (13W, 2700K CCT)

DATA OF LAMP		PHOTOMETRIC DATA				Eff: 82.41 lm/W
MODEL		Imax (cd)	375.1	S/MH (C0/180)	1.25	
NOMINAL POWER (W)	13	LOR (%)	100.0	S/MH (C90/270)	1.23	
RATED VOLTAGE (V)	120	TOTAL FLUX (lm)	1029.2	η UP, DN (C0-180)	0.0, 49.4	
NOMINAL FLUX (lm)	1029.2	CIE CLASS	DIRECT	η UP, DN (C180-360)	0.0, 50.6	
LAMPS INSIDE	1	η up (%)	0.0	CIBSE SHR NOM	1.25	
TEST VOLTAGE (V)	120	η down (%)	100.0	CIBSE SHR MAX	1.35	

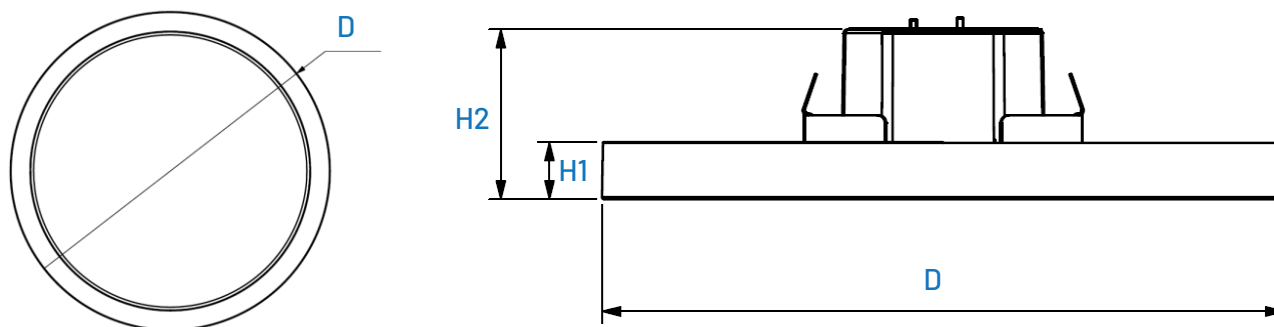


DS 7R G2 (15W, 2700K CCT)

DATA OF LAMP		PHOTOMETRIC DATA				Eff: 96.73 lm/W
MODEL		Imax (cd)	507.1	S/MH (C0/180)	1.23	
NOMINAL POWER (W)	15	LOR (%)	100.0	S/MH (C90/270)	1.24	
RATED VOLTAGE (V)	120	TOTAL FLUX (lm)	1390.4	η UP, DN (C0-180)	0.0, 49.6	
NOMINAL FLUX (lm)	1390.39	CIE CLASS	DIRECT	η UP, DN (C180-360)	0.0, 50.4	
LAMPS INSIDE	1	η up (%)	0.0	CIBSE SHR NOM	1.25	
TEST VOLTAGE (V)	120	η down (%)	100.0	CIBSE SHR MAX	1.35	



Dimensions



MODEL	Diameter (D)	Height (After Install) (H1)	Height (H2)
5in Round	5.24 in (133 mm)	0.57 in (14.5mm)	1.75 in (44.5mm)
7in Round	7 in (178 mm)	0.57 in (14.5mm)	1.75 in (44.5mm)

Dimmer compatibility

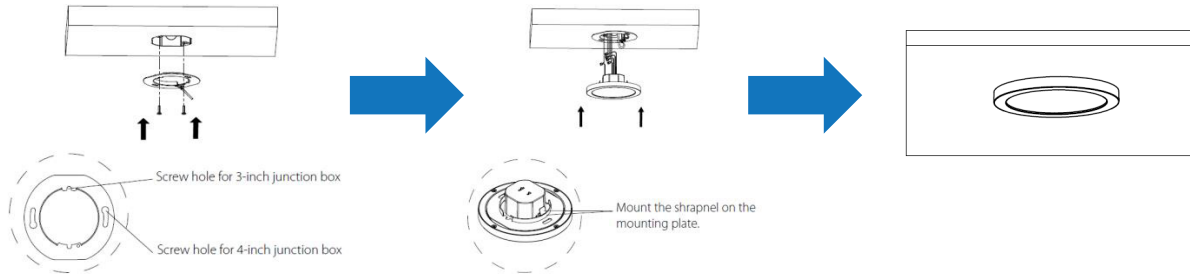
Catalog Number
DS 5R LS10 G2 UNV 9FSK
DS 7R LS14 G2 UNV 9FSK

Catalog Number
DS 5R LS10 G2 9FSK
DS 7R LS14 G2 9FSK

No.	Brand	Model No.	Interface
1	Leviton	IP710-DLZ	0-10V
2	Lithonia/Synergy	ISD BC 120/277 WH	0-10V
3	Cooper	SF10P-W	0-10V
4	Lutron	DVSTV-WH	0-10V
5	HUBBELL	PSD710	0-10V
6	HUBBELL	RSD710Z	0-10V

No.	Brand	Model No.	Max. Watt	Interface
1	Leviton	6633-PA	600W	TRIAC
2	Leviton	6631-PLW	600W	TRIAC
3	Leviton	IPL06-10Z	600W	Universal
4	Lutron	CTCL-153P-WH	150W	TRIAC
5	Lutron	S2-LH	300W	TRIAC
6	Lutron	DV-600P	600W	TRIAC
7	Lutron	DVCL-153P	150W	TRIAC

Installation Diagram



Compatible J-Boxes

Round - New Work (Plastic)



4" Diameter x 2-3/16"
3.5" Diameter x 2-3/4"

Round - Old Work (Plastic)



4.25" flange x 2-5/8"
3.5" I.D.

Octagon - Steel



4" x 2-1/8"
4" x 1.5"

Square - Steel

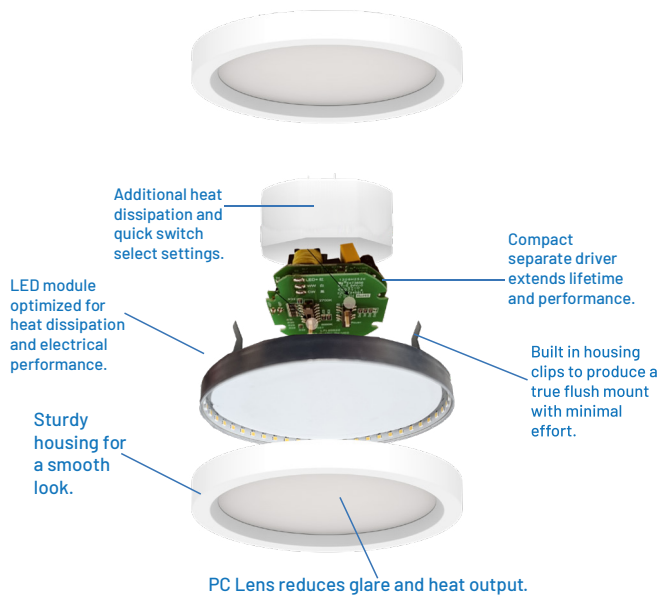


4" x 4" X 2-1/8"
4" X 4" x 1.5"

These may look the same on the outside ...

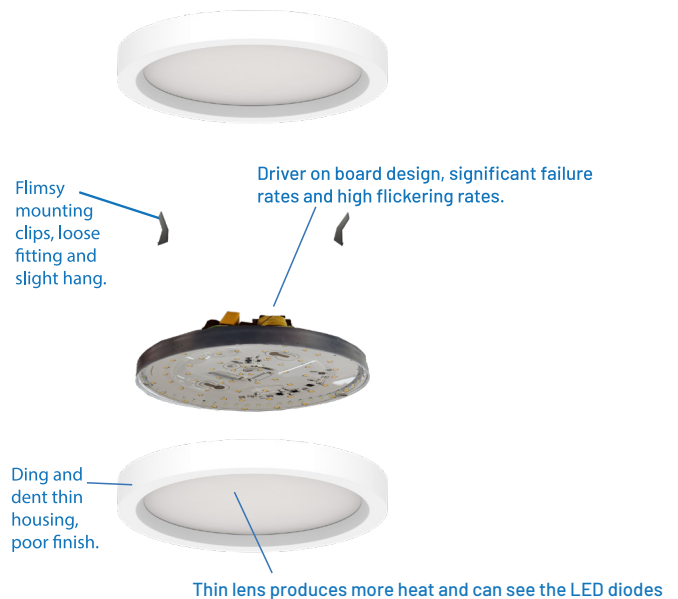
DS G2

No headaches - right priced



Cheap knockoff

Low cost - poor, poor quality



You wouldn't drive a car without a transmission.

Your fixtures perform better with a dedicated driver and LED board. When they're combined (Direct on Board), they perform at half ability.

Our flush mount fixtures are designed the right way with an LED driver separate from the LED board to extend the lifeline, reduce flickering, and produce significantly less failures.

