

LEDVANCE LUMINAIRES

DUAL SELECTABLE AREA FLOOD

LEDVANCE LUMINAIRE SPECIFICATION DATA

| Catalog # | Comments |
|-------------|----------|
| Project | |
| Type | |
| Prepared by | |

PERFORMANCE CLASS™



APPLICATION

The Performance Class Dual Selectable Area Flood offers 3 CCTs and 3 lumen outputs in the same product, an integrated 7-pin NEMA receptacle and field installable screw-in sensors. Available in multiple distribution options, it is ideal for parking lots, walkways and general outdoor area lighting.

BENEFITS & FEATURES

- Up to 160 LPW
- Selectable color temperature: 3000K, 4000K, 5000K
- CRI>80
- Selectable wattage and lumens:
 - 40/60/80W | 6,400/9,600/12,800 lm
 - 90/120/150W | 14,400/19,200/24,000 lm
 - 180/240/300W | 28,800/38,400/48,000 lm
- Universal mounting bracket
- DLC 5.1 Premium Listing assures high energy efficiency and qualifies this product for utility rebates
- Type II, III, IV, V, and front row distribution options
- Field installable motion/daylight sensor
- Compatible with LEDVANCE LINK™ Bluetooth® controls and sensors
- 7-pin NEMA receptacle + shorting cap (optional photocell available as an accessory)



ELECTRICAL

- 120-347 VAC (optional 277-480 Vac)
- Power Factor > 0.9
- THD < 20%
- Dimmable 0-10V
- 10kV Surge protection

RATED LIFE

- 100,000 hours (L₇₀) @ 25°C

OPERATING TEMPERATURE

- -40°F to +122°F (-40°C to +50°C)

CERTIFICATIONS & LISTINGS

- cULus listed to UL1598 standards
- RoHs
- FCC
- IP65, wet location
- DLC 5.1 Premium

WARRANTY

- 5 year
- NLB Trusted Warranty Program

INSTALLATION

- Universal mounting bracket included for square and round pole mounting as well as slip fitter mount

ORDERING GUIDE

| AREAFLD | 6A | SXXX | XXX | D | 8 | SCX | X | X |
|----------------------|--------------------|---------------------------------------------------------------|----------------------------------|-------------------|--------------|-----------------------|-----------------------------------------------------------------------------------------------------------------------------|--------------|
| PRODUCT NAME | GENERATION | WATTAGE | VOLTAGE | DIMMING | CRI | COLOR TEMPERATURE | DISTRIBUTION | COLOR/FINISH |
| AREAFLD = Area Flood | 6A = Generation 6A | S080 = 40/60/80W S150 = 90/120/150W S300 = 180/240/300W | UNH = 120-347V HUV = 277-480V | D = 0-10V Dimming | 80 = >80 CRI | SC2 = 3000/4000/5000K | T2 = T2 Distribution T3 = T3 Distribution T4 = T4 Distribution T5 = T5 Distribution FR = Front Row Distribution | BZ = Bronze |

ORDERING INFORMATION

| ITEM # | ORDERING ABBREVIATION | WATTAGE (W) | INPUT VOLTAGE (V) | DIM. (V) | CRI | COLOR TEMP (CCT) | DISTRIBUTION | TOTAL LUMENS @ 4000K (LM) | DLC | LPW @ 4000K | BUG RATING | MTO** |
|--------|--------------------------|-------------|-------------------|----------|-----|------------------|-----------------|---------------------------|-----------|-------------|------------|-------|
| 63845 | AREAFLD6AS080UNHDSC2T2BZ | 40/60/80 | 120-347 | 0-10 | >80 | 3000/4000/5000 | T2 Distribution | 6000/9000/12000 | 5.1 Prem* | Up to 160 | B3-U0-G3 | ✓ |
| 63846 | AREAFLD6AS080UNHDSC2T3BZ | 40/60/80 | 120-347 | 0-10 | >80 | 3000/4000/5000 | T3 Distribution | 6000/9000/12000 | 5.1 Prem* | Up to 160 | B3-U0-G3 | – |
| 63847 | AREAFLD6AS080UNHDSC2T4BZ | 40/60/80 | 120-347 | 0-10 | >80 | 3000/4000/5000 | T4 Distribution | 6000/9000/12000 | 5.1 Prem* | Up to 160 | B3-U0-G3 | – |
| 63848 | AREAFLD6AS080UNHDSC2T5BZ | 40/60/80 | 120-347 | 0-10 | >80 | 3000/4000/5000 | T5 Distribution | 6000/9000/12000 | 5.1 Prem* | Up to 160 | B3-U0-G1 | – |
| 63849 | AREAFLD6AS080UNHDSC2FRBZ | 40/60/80 | 120-347 | 0-10 | >80 | 3000/4000/5000 | FR Distribution | 6000/9000/12000 | 5.1 Prem* | Up to 160 | B3-U0-G3 | ✓ |
| 63963 | AREAFLD6AS080HUVVSC2T2BZ | 40/60/80 | 277-480 | 0-10 | >80 | 3000/4000/5000 | T2 Distribution | 6000/9000/12000 | 5.1 Prem* | Up to 160 | B3-U0-G3 | ✓ |
| 63964 | AREAFLD6AS080HUVVSC2T3BZ | 40/60/80 | 277-480 | 0-10 | >80 | 3000/4000/5000 | T3 Distribution | 6000/9000/12000 | 5.1 Prem* | Up to 160 | B3-U0-G3 | ✓ |
| 63965 | AREAFLD6AS080HUVVSC2T4BZ | 40/60/80 | 277-480 | 0-10 | >80 | 3000/4000/5000 | T4 Distribution | 6000/9000/12000 | 5.1 Prem* | Up to 160 | B3-U0-G3 | ✓ |
| 63966 | AREAFLD6AS080HUVVSC2T5BZ | 40/60/80 | 277-480 | 0-10 | >80 | 3000/4000/5000 | T5 Distribution | 6000/9000/12000 | 5.1 Prem* | Up to 160 | B3-U0-G1 | ✓ |
| 63967 | AREAFLD6AS080HUVVSC2FRBZ | 40/60/80 | 277-480 | 0-10 | >80 | 3000/4000/5000 | FR Distribution | 6000/9000/12000 | 5.1 Prem* | Up to 160 | B3-U0-G3 | ✓ |
| 63850 | AREAFLD6AS150UNHDSC2T2BZ | 90/120/150 | 120-347 | 0-10 | >80 | 3000/4000/5000 | T2 Distribution | 13500/18000/22500 | 5.1 Prem* | Up to 160 | B4-U0-G4 | ✓ |
| 63851 | AREAFLD6AS150UNHDSC2T3BZ | 90/120/150 | 120-347 | 0-10 | >80 | 3000/4000/5000 | T3 Distribution | 13500/18000/22500 | 5.1 Prem* | Up to 160 | B4-U0-G4 | – |
| 63852 | AREAFLD6AS150UNHDSC2T4BZ | 90/120/150 | 120-347 | 0-10 | >80 | 3000/4000/5000 | T4 Distribution | 13500/18000/22500 | 5.1 Prem* | Up to 160 | B3-U0-G3 | – |
| 63853 | AREAFLD6AS150UNHDSC2T5BZ | 90/120/150 | 120-347 | 0-10 | >80 | 3000/4000/5000 | T5 Distribution | 13500/18000/22500 | 5.1 Prem* | Up to 160 | B4-U0-G2 | – |
| 63854 | AREAFLD6AS150UNHDSC2FRBZ | 90/120/150 | 120-347 | 0-10 | >80 | 3000/4000/5000 | FR Distribution | 13500/18000/22500 | 5.1 Prem* | Up to 160 | B4-U0-G4 | ✓ |
| 63968 | AREAFLD6AS150HUVVSC2T2BZ | 90/120/150 | 277-480 | 0-10 | >80 | 3000/4000/5000 | T2 Distribution | 13500/18000/22500 | 5.1 Prem* | Up to 160 | B4-U0-G4 | ✓ |

ORDERING INFORMATION (CONTINUED)

| ITEM # | ORDERING ABBREVIATION | WATTAGE (W) | INPUT VOLTAGE (V) | DIM. (V) | CRI | COLOR TEMP (CCT) | DISTRIBUTION | TOTAL LUMENS @ 4000K (LM) | DLC | LPW @ 4000K | BUG RATING | MTO** |
|--------|--------------------------|-------------|-------------------|----------|-----|------------------|-----------------|---------------------------|-----------|-------------|------------|-------|
| 63969 | AREAFLD6AS150HUVDC2T3BZ | 90/120/150 | 277-480 | 0-10 | >80 | 3000/4000 /5000 | T3 Distribution | 13500/18000 /22500 | 5.1 Prem* | Up to 160 | B4-U0-G4 | ✓ |
| 63970 | AREAFLD6AS150HUVDC2T4BZ | 90/120/150 | 277-480 | 0-10 | >80 | 3000/4000 /5000 | T4 Distribution | 13500/18000 /22500 | 5.1 Prem* | Up to 160 | B3-U0-G3 | ✓ |
| 63971 | AREAFLD6AS150HUVDC2T5BZ | 90/120/150 | 277-480 | 0-10 | >80 | 3000/4000 /5000 | T5 Distribution | 13500/18000 /22500 | 5.1 Prem* | Up to 160 | B4-U0-G2 | ✓ |
| 63972 | AREAFLD6AS150HUVDC2FRBZ | 90/120/150 | 277-480 | 0-10 | >80 | 3000/4000 /5000 | FR Distribution | 13500/18000 /22500 | 5.1 Prem* | Up to 160 | B4-U0-G4 | ✓ |
| 63855 | AREAFLD6AS300UNHDSC2T2BZ | 180/240/300 | 120-347 | 0-10 | >80 | 3000/4000 /5000 | T2 Distribution | 27000/36000 /45000 | 5.1 Prem* | Up to 160 | B5-U0-G5 | ✓ |
| 63856 | AREAFLD6AS300UNHDSC2T3BZ | 180/240/300 | 120-347 | 0-10 | >80 | 3000/4000 /5000 | T3 Distribution | 27000/36000 /45000 | 5.1 Prem* | Up to 160 | B5-U0-G5 | - |
| 63857 | AREAFLD6AS300UNHDSC2T4BZ | 180/240/300 | 120-347 | 0-10 | >80 | 3000/4000 /5000 | T4 Distribution | 27000/36000 /45000 | 5.1 Prem* | Up to 160 | B5-U0-G5 | - |
| 63858 | AREAFLD6AS300UNHDSC2T5BZ | 180/240/300 | 120-347 | 0-10 | >80 | 3000/4000 /5000 | T5 Distribution | 27000/36000 /45000 | 5.1 Prem* | Up to 160 | B5-U0-G3 | - |
| 63859 | AREAFLD6AS300UNHDSC2FRBZ | 180/240/300 | 120-347 | 0-10 | >80 | 3000/4000 /5000 | FR Distribution | 27000/36000 /45000 | 5.1 Prem* | Up to 160 | B5-U0-G5 | ✓ |
| 63973 | AREAFLD6AS300HUVDC2T2BZ | 180/240/300 | 277-480 | 0-10 | >80 | 3000/4000 /5000 | T2 Distribution | 27000/36000 /45000 | 5.1 Prem* | Up to 160 | B5-U0-G5 | ✓ |
| 63974 | AREAFLD6AS300HUVDC2T3BZ | 180/240/300 | 277-480 | 0-10 | >80 | 3000/4000 /5000 | T3 Distribution | 27000/36000 /45000 | 5.1 Prem* | Up to 160 | B5-U0-G5 | ✓ |
| 63975 | AREAFLD6AS300HUVDC2T4BZ | 180/240/300 | 277-480 | 0-10 | >80 | 3000/4000 /5000 | T4 Distribution | 27000/36000 /45000 | 5.1 Prem* | Up to 160 | B5-U0-G5 | ✓ |
| 63976 | AREAFLD6AS300HUVDC2T5BZ | 180/240/300 | 277-480 | 0-10 | >80 | 3000/4000 /5000 | T5 Distribution | 27000/36000 /45000 | 5.1 Prem* | Up to 160 | B5-U0-G3 | ✓ |
| 63977 | AREAFLD6AS300HUVDC2FRBZ | 180/240/300 | 277-480 | 0-10 | >80 | 3000/4000 /5000 | FR Distribution | 27000/36000 /45000 | 5.1 Prem* | Up to 160 | B5-U0-G5 | ✓ |

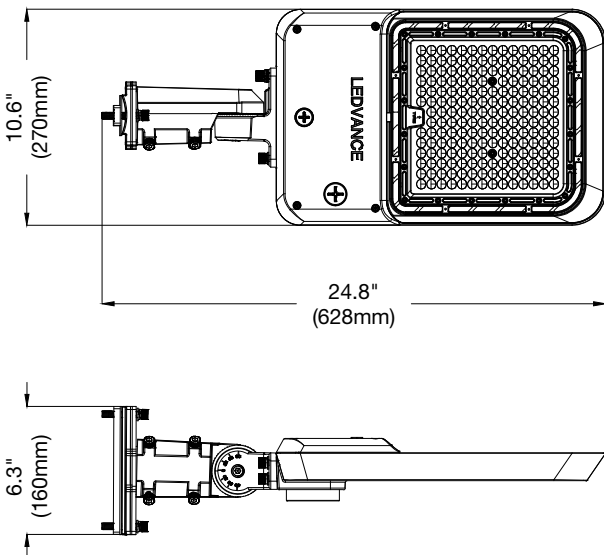
*Coming Soon

**Made to Order

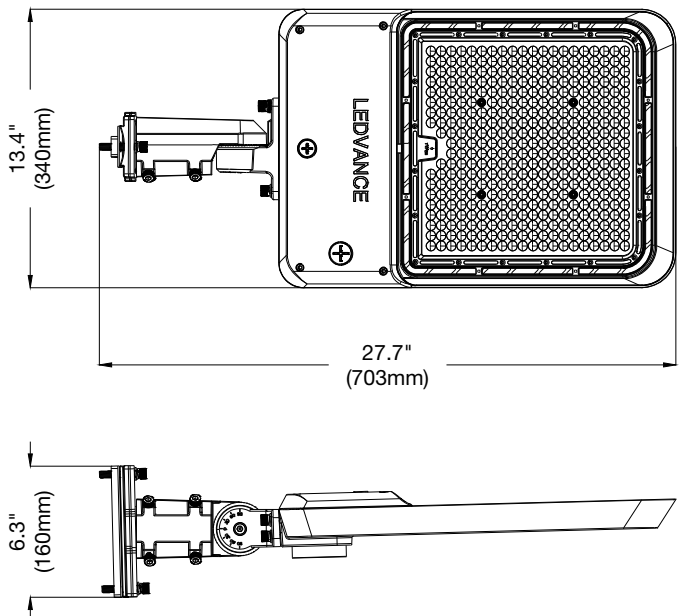
PHYSICAL INFORMATION

| LUMINAIRE DESCRIPTION | LENGTH IN (MM) | WIDTH IN (MM) | HEIGHT IN (MM) | WEIGHT LB (KG) | EPA |
|-----------------------|----------------|---------------|----------------|----------------|----------------------|
| 80W/150W | 24.8 (628) | 10.6 (270) | 6.3 (160) | 13 (5.9) | 1.65 ft ² |
| 300W | 27.7 (703) | 13.4 (340) | 6.3 (160) | 16 (7.26) | 2.15 ft ² |

80W-150W

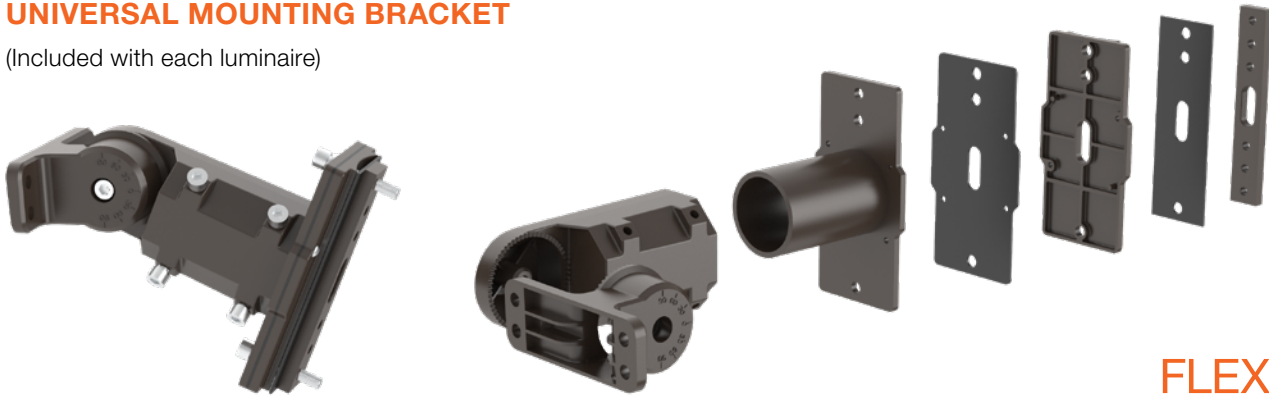


300W



UNIVERSAL MOUNTING BRACKET

(Included with each luminaire)



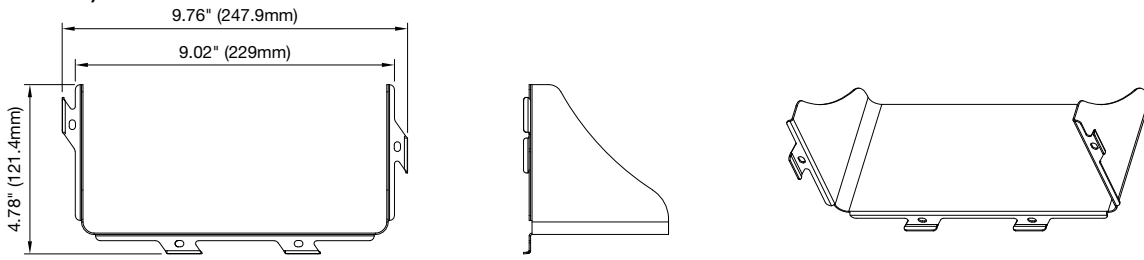
FLEXMOUNT

ACCESSORIES

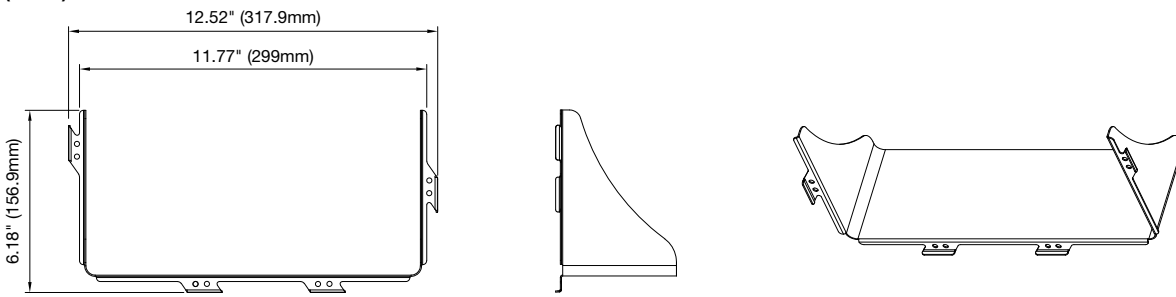
| ITEM # | ORDERING ABBREVIATION | ITEM DESCRIPTION |
|-----------------------------------|----------------------------|---------------------------------------------------------------------------------------------|
| Visors | | |
| 63959 | AREAFLD6ASMVISORLRBZ | Small Visor, left and right, Bronze |
| 63978 | AREAFLD6ASMVISORFBBZ | Small Visor, front and back, Bronze |
| 63960 | AREAFLD6ALRGVISORLRBZ | Large Visor, left and right, Bronze |
| 63979 | AREAFLD6ALRGVISORFBBZ | Large Visor, front and back, Bronze |
| Bird Spikes | | |
| 63961 | AREAFLD6ASMBIRDSPIKE | Small Birdspike |
| 63962 | AREAFLD6ALRGBIRDSPIKE | Large Birdspike |
| Sensors | | |
| 63748 | AREA/PIRMOTIONDAYSENSOR/BZ | Field installable PIR Motion/Daylight Sensor, IP65, Max. mounting height 39ft, Bronze |
| 65732 | AREA/MWMOTIONDAYSENSOR/BZ | Field installable Microwave Motion/Daylight Sensor, IP65, Max. mounting height 49ft, Bronze |
| 62664 | HIGHBAYPIRMOTIONDAYSENSOR2 | Field installable PIR Motion/Daylight Sensor, IP65, Max. mounting height 39ft, White |
| 65622 | HIGHBAYMOTIONDAYSENSOR | Field installable Microwave Motion/Daylight Sensor, IP65, Max. mounting height 49ft, White |
| 65623 | REMOTE/MOTIONDAY/001 | Remote control for Motion/Daylight Sensors – Remote is required to change default settings |
| Photocells | | |
| 61393 | AREAFLDXANEMAPHOTOCELLUNV | Area/Flood NEMA photocell 120-277V |
| 61394 | AREAFLDXANEMAPHOTOCELL347 | Area/Flood NEMA photocell 347V |
| 61395 | AREAFLDXANEMAPHOTOCELL480 | Area/Flood NEMA photocell 480V |
| LEDVANCE LINK™ Accessories | | |
| 63652 | SENSORADAPTER1A | Sensor adapter for LEDVANCE LINK™ sensors |
| 62634 | SENSORHB/PIRAUX12V/BLE | Bluetooth® mesh wireless controller and sensor, LEDVANCE LINK™ |
| 62630 | ADAPTER/AUX12V/BLE | Bluetooth® Mesh low voltage controller-BLE enabled fixture |

ACCESSORIES: PHYSICAL INFORMATION

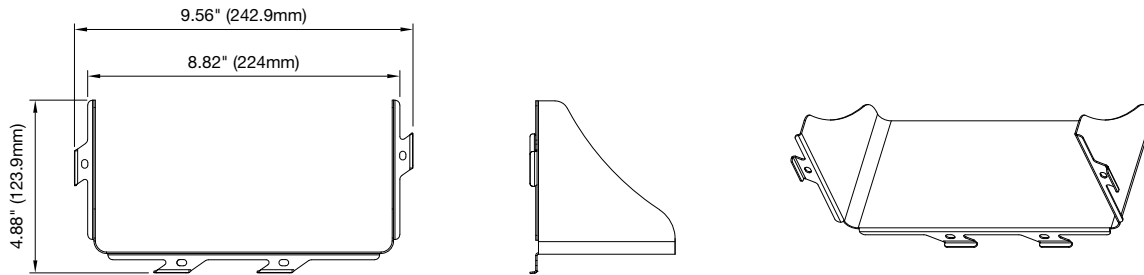
FRONT AND BACK VISOR (80W-150W)



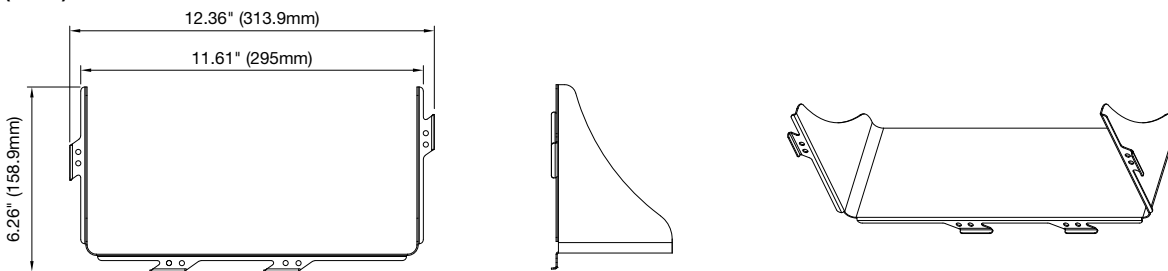
FRONT AND BACK VISOR (300W)



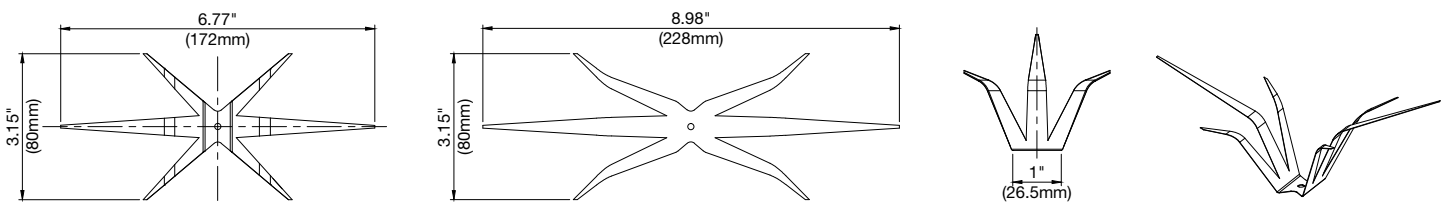
RIGHT AND LEFT VISOR (80W-150W)



RIGHT AND LEFT VISOR (300W)

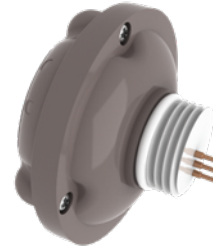


BIRD SPIKE



OPTIONAL MOTION/DAYLIGHT SENSOR DEFAULT SETTINGS

| | |
|--------------------------------------------------------------------------|------------|
| Detection Area | 100% |
| Hold time – Time fixtures stays at 100% after last motion before dimming | 10 minutes |
| Daylight threshold – Light level above which lights will remain off | 50 Lux |
| Stand-by period – Time light remains dimmed before shutting off | 60 minutes |
| Stand-by Dimming – dimming level of light during the stand-by period | 30% |



MOTION SENSOR
Bronze: 63748/65732
White: 62664/65662



REMOTE
(65623)

OPTIONAL LEDVANCE LINK ACCESSORIES



BLUETOOTH® MESH WIRELESS CONTROLLER & SENSOR, LEDVANCE LINK (62634)



SENSOR ADAPTER FOR LEDVANCE LINK SENSORS (63652)

BENEFITS & FEATURES

- The LEDVANCE LINK Bluetooth® Mesh Low Voltage components use Bluetooth technology for easy and secure wireless communication
- Enables regular LEDVANCE luminaires to become Bluetooth enabled and allows for luminaires to be turned on/off and dimmed (manual or auto)
- Components can be used up to 40ft fixture mounting height
- Control using either the LEDVANCE LINK™ smart phone app or the wireless wall switch

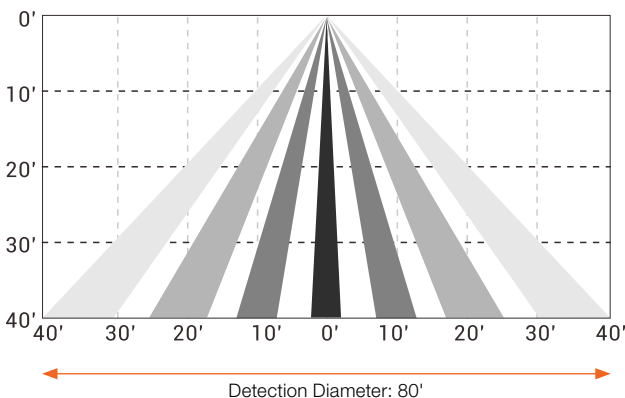
SENSOR INFORMATION

- Input voltage: 12Vdc
- Bluetooth transmit line distance: 100ft
- Detection range: 48-80ft
- Rated current: 55mA
- Dimming: 0-10V
- Infrared sensor: Omni-directional quad element pyroelectric
- Mounting height: 15-40ft
- Detectable speed: 1~10 ft/sec (0.3~3 m/sec)
- Operating temperature: -40°F~131°F (-40°C~55°C)
- Operating humidity: IP66
- Protocol: Bluetooth® Mesh BLE Proprietary

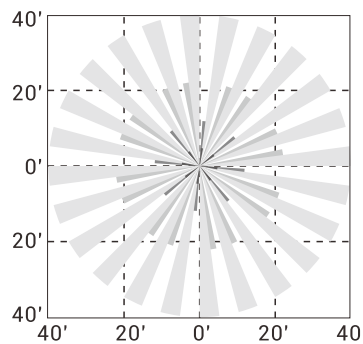


MOUNTING HEIGHT: UP TO 40'

Detection Coverage Side View



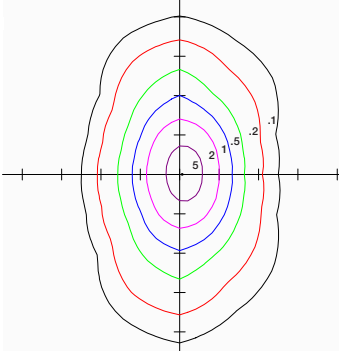
Detection Coverage Top View



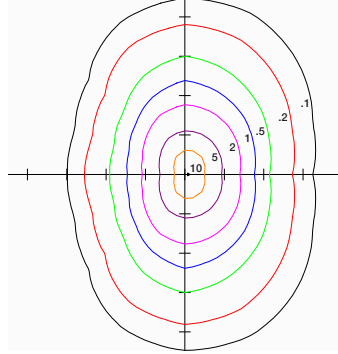
PHOTOMETRIC INFORMATION

HORIZONTAL ISO FOOT-CANDLE PLOT

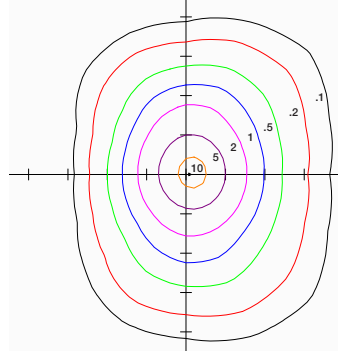
80W Fixture, Type II Distribution, Mounted at 20' mounting height



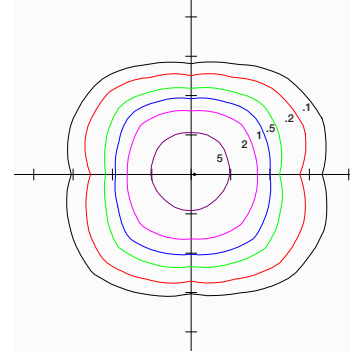
80W Fixture, Type III Distribution, Mounted at 15' mounting height



80W Fixture, Type IV Distribution, Mounted at 15' mounting height

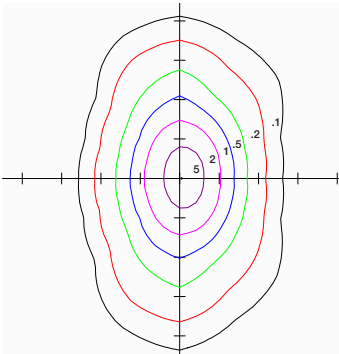


80W Fixture, Type V Distribution, Mounted at 15' mounting height

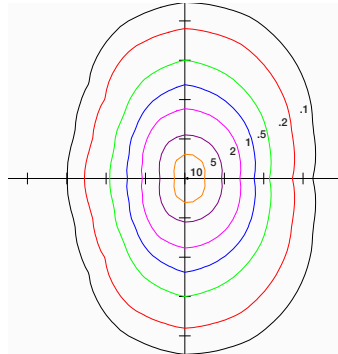


| MOUNTING HEIGHT (FT) | 10 | 12 | 15 | 18 | 20 | 22 |
|----------------------|------|------|------|------|------|------|
| MULTIPLIER | 2.25 | 1.56 | 1.00 | 0.69 | 0.56 | 0.46 |

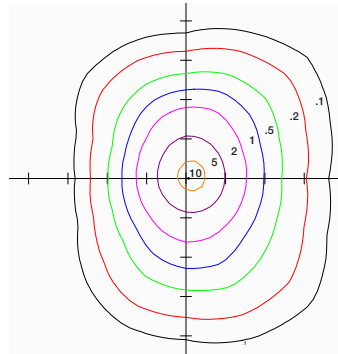
150W Fixture, Type II Distribution, Mounted at 25' mounting height



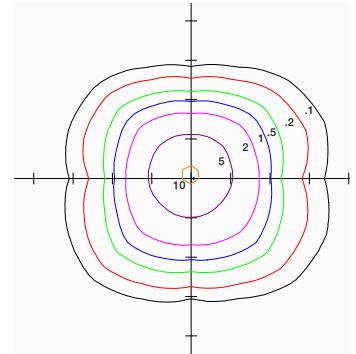
150W Fixture, Type III Distribution, Mounted at 20' mounting height



150W Fixture, Type IV Distribution, Mounted at 20' mounting height

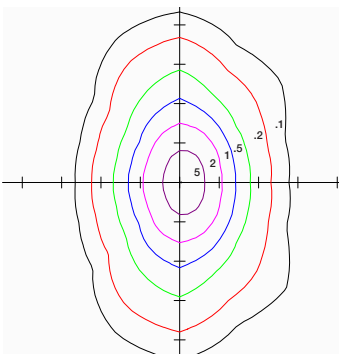


150W Fixture, Type V Distribution, Mounted at 20' mounting height

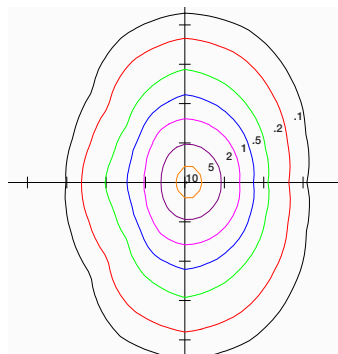


| MOUNTING HEIGHT (FT) | 12 | 15 | 18 | 20 | 22 | 25 |
|----------------------|------|------|------|----|------|------|
| MULTIPLIER | 2.78 | 1.78 | 1.23 | 1 | 0.83 | 0.64 |

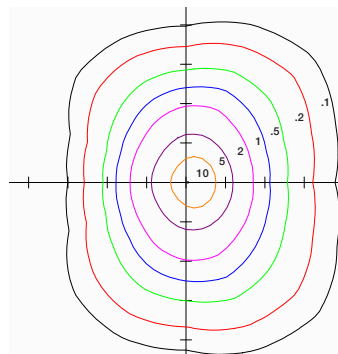
300W Fixture, Type II Distribution, Mounted at 35' mounting height



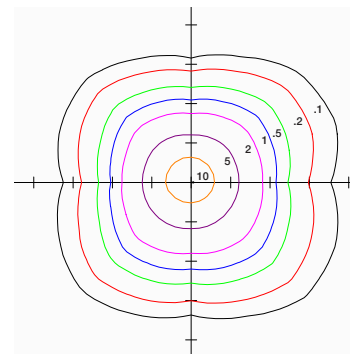
300W Fixture, Type III Distribution, Mounted at 30' mounting height



300W Fixture, Type IV Distribution, Mounted at 25' mounting height



300W Fixture, Type V Distribution, Mounted at 25' mounting height



| MOUNTING HEIGHT (FT) | 15 | 20 | 22 | 25 | 30 | 35 |
|----------------------|------|------|------|----|------|------|
| MULTIPLIER | 2.78 | 1.56 | 1.29 | 1 | 0.69 | 0.51 |



LEDVANCE LLC
181 Ballardvale Street, Suite 203
Wilmington, MA 01887 USA
Phone: 1-800-LIGHTBULB (1-800-544-4828)
www.ledvanceUS.com

LEDVANCE is a registered trademark.
The Bluetooth® word mark and logos are registered trademarks owned by the Bluetooth SIG, Inc. and any use of such marks by LEDVANCE LLC is under license. All other trademarks are those of their respective owners. Specifications subject to change without notice.



SCAN TO FOLLOW US
ON SOCIAL MEDIA