

Diva Fan-Speed Controls

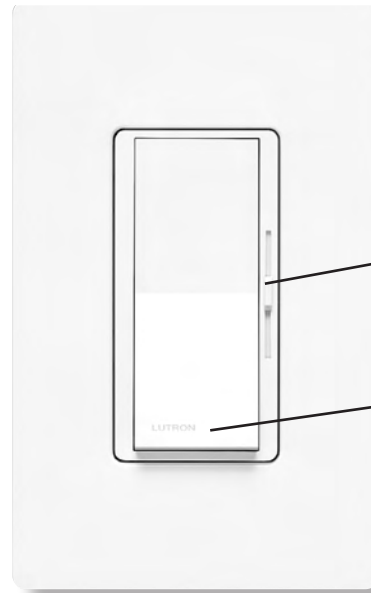
The designer fan-speed control that matches your paddle switches.

Features

- On/off rocker switch with a captive slider
- Quiet 3-speed control of ceiling fan
- Requires separate wires at the wallbox for independent control of the fan and the light
- No neutral is required at the wallbox
- No nightlight
- 100% factory-tested
- Coordinating Claro and Stainless Steel wallplates are available separately
- Fan-only version can be wired as a single pole or 3-way

Model Numbers

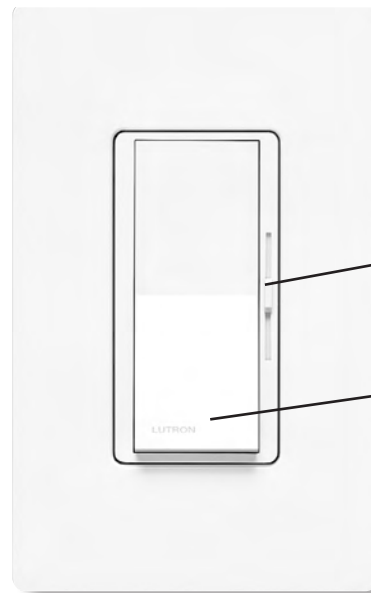
Model Number	Description	Maximum Capacity	
DVFSQ-F-XX ^{1,2,3,4,7} DVFSQ-F-XX-CSA ^{1,2,3,4,5,7}	Gloss finishes Preset fan-speed control Single-pole/3-way, 3 speed	1.5 A	
DVSCFSQ-F-YY ^{1,3,4,7}	Satin finishes Preset fan-speed control Single-pole/3-way, 3 speed	1.5 A	
DVWFSQ-FH-XX ^{1,3,4,6,7} DVWFSQ-FH-XX-CSA ^{1,3,4,5,6,7}	Gloss finishes Preset fan-speed control Single-pole/3-way, 3 speed Clamshell packaging Wallplate included	1.5 A	
DVFSQ-LF-XX ^{1,2,4} DVFSQ-LF-XX-C ^{1,2,4,5}	Gloss finishes Light switch/ Fan-speed control Single-pole light and fan	Single-pole switch Incandescent/ Halogen	2 A
			CFL/LED
		Fan (3-speed with Off)	1.5 A
DVSCFSQ-LF-YY ^{1,4}	Satin finishes Light switch/ Fan-speed control Single-pole light and fan	Single-pole switch Incandescent/ Halogen	2 A
			CFL/LED
		Fan (3-speed with Off)	1.5 A
DVFSQ-F-HO-XX ^{1,3,4,7}	For Hunter Original Series fans Gloss finishes Preset fan-speed control Single-pole/3-way, 3 speed	2 A	



Select fan-speed with slider

Switch on (to selected fan-speed), and off

DVFSQ-F
(Wallplates sold separately)



Select fan-speed and off with slider

Switch light on and off

DVFSQ-LF
(Wallplates sold separately)

¹ "XX" or "YY" in the model number represents color/finish code; see **Colors and Finishes** section.
² For clamshell packaging, add "H" after "F" or "LF". Call Lutron Customer Assistance for color availability.
³ For 3-way and 4-way switching, use Claro switches or other mechanical switches.
⁴ No derating required.
⁵ Canadian packaged product.
⁶ These products include a wallplate.
⁷ Fan-only controls not intended for use in controlling lighting loads.

Job Name: <input type="text"/>	Model Numbers: <input type="text"/>	
Job Number: <input type="text"/>	<input type="text"/>	<input type="text"/>

Specifications

Regulatory Approvals

- DVFSQ-LF: cULus Listed
- DVFSQ-F: UL/CSA
- NOM certified

Power and Ratings

- 120 V~ 60 Hz

Environment

- For indoor use only.
- Operating temperatures 32 °F to 104 °F (0 °C to 40 °C).

Performance

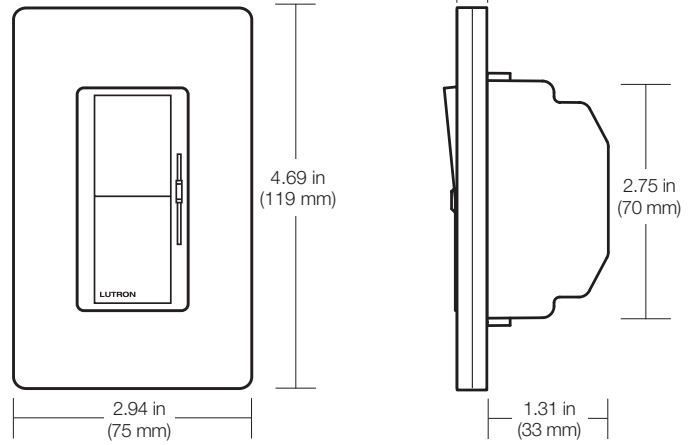
- Power-failure memory
- Captive linear slider
- Electrostatic discharge tested
- Precise color matching with Claro wallplates
- Mechanical air-gap switch to disconnect load power

Warranty

- 1 Year Limited Warranty

For additional Warranty information, please visit www.lutron.com/TechnicalDocumentLibrary/369-119_Wallbox_Warranty.pdf

Dimensions

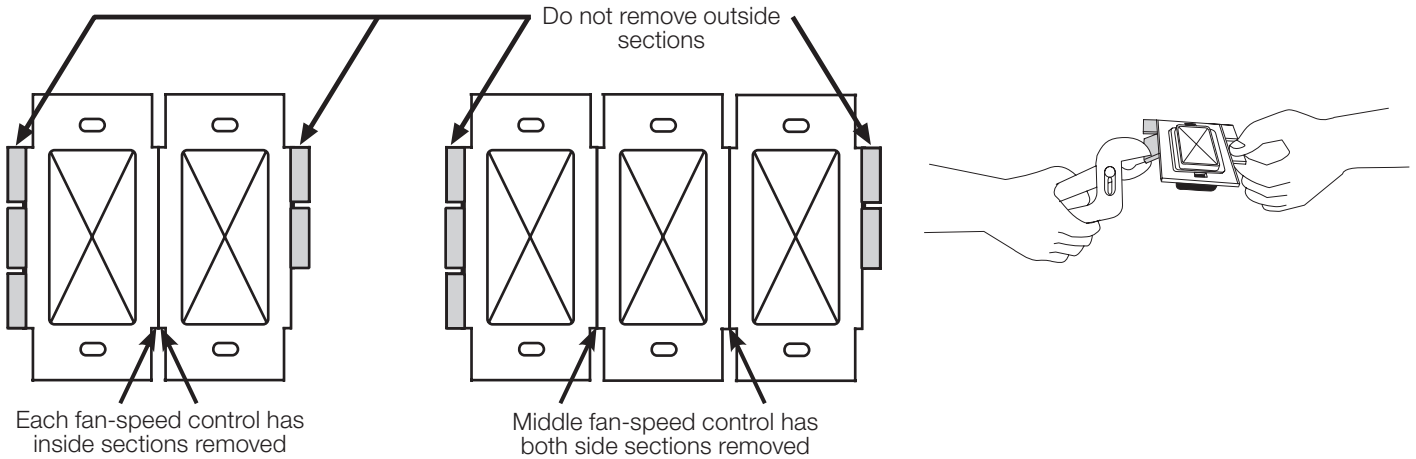


Note: Requires a U.S. wallbox 2½ in (64 mm) deep minimum. Overall width and height dimensions shown are with a Claro wallplate (sold separately).

Job Name: <input style="width: 90%; height: 20px;" type="text"/>	Model Numbers: <input style="width: 95%; height: 20px;" type="text"/>	
Job Number: <input style="width: 80%; height: 20px;" type="text"/>	<input style="width: 95%; height: 20px;" type="text"/>	<input style="width: 95%; height: 20px;" type="text"/>

Ganging *

When installing more than one fan-speed control in the same wallbox, it may be necessary to remove some side sections prior to wiring (see diagram).

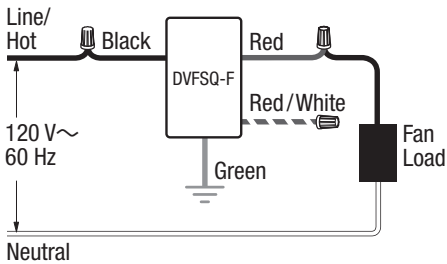


* No derating required.

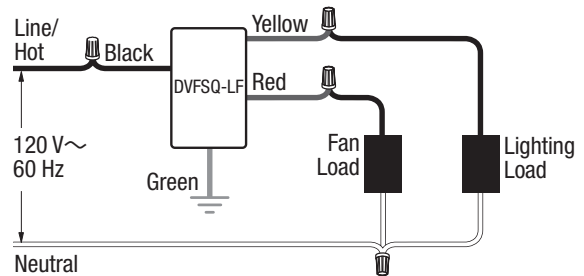
Wiring Diagrams

Single-Pole Wiring

DVFSQ-F

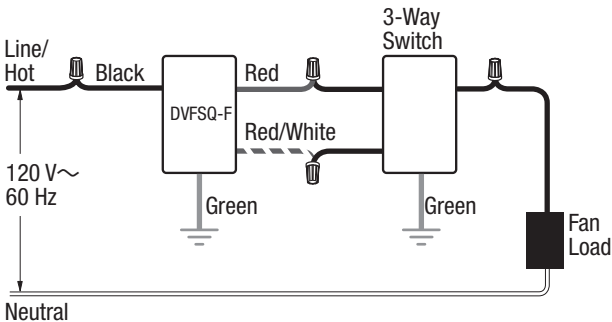


DVFSQ-LF

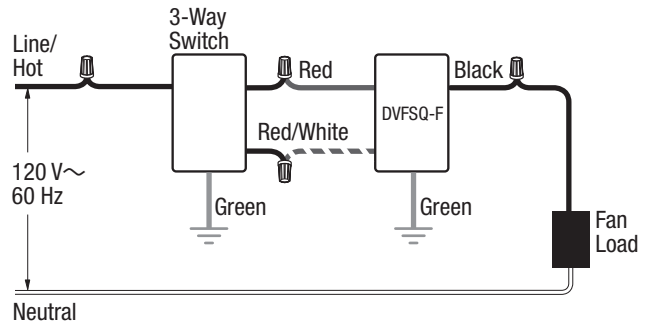


3-Way Wiring

DVFSQ-F - Line-Side



DVFSQ-F - Load-Side

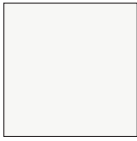


Job Name:	Model Numbers:	
<input type="text"/>	<input type="text"/>	<input type="text"/>
Job Number:	<input type="text"/>	<input type="text"/>

Colors and Finishes

Gloss Finishes

Satin Finishes



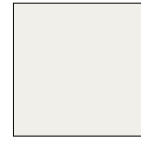
White
WH



Ivory
IV



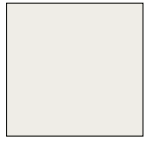
Brilliant White
BW



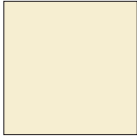
Glacier White
GL



Snow
SW



Architectural
White
RW



Almond
AL



Light Almond
LA



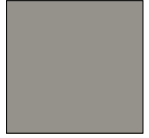
Lunar Gray
LG



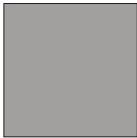
Mist
MI



Pebble
PB



Cobblestone
CS



Gray
GR



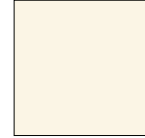
Brown
BR



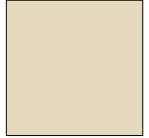
Slate
SL



Midnight
MN



Biscuit
BI



Sand
SD



Black
BL



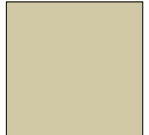
Taupe
TP



Pumice
PM



Clay
CY



Sage
SA



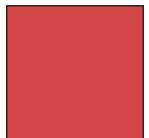
Espresso
EP



Truffle
TF



Deep Sea
DE



Signal Red
SR

- Due to printing limitations, colors and finishes shown cannot be guaranteed to perfectly match actual product colors.
- Color chip keychains are available for more precise color matching:
Gloss Finishes: DG-CK-1
Satin Finishes: SF-CK-1
- For coordinating wallplates and accessories, visit lutron.com/claro

Job Name: <input type="text"/>	Model Numbers: <input type="text"/>	
Job Number: <input type="text"/>	<input type="text"/>	<input type="text"/>

Colors and Finishes *(continued)*

Satin Colors (while supplies last)



Hot
HT



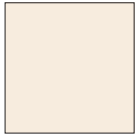
Merlot
MR



Plum
PL



Palladium
PD



Eggshell
ES



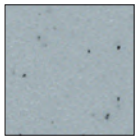
Sienna
SI



Terracotta
TC



Greenbriar
GB



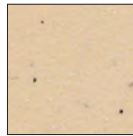
Bluestone
BG



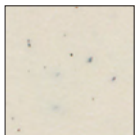
Mocha Stone
MS



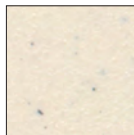
Goldstone
GS



Desert Stone
DS



Stone
ST



Limestone
LS

- Due to printing limitations, colors and finishes shown cannot be guaranteed to perfectly match actual product colors.
- Color chip keychains are available for more precise color matching:
Satin Colors: SC-CK-1 (while supplies last)

The Lutron logo, Lutron, Claro, Satin Colors, and Diva are trademarks or registered trademarks of Lutron Electronics Co., Inc. in the US and/or other countries. All other product names, logos, and brands are property of their respective owners.

Job Name: <input type="text"/>	Model Numbers: <input type="text"/>	
Job Number: <input type="text"/>	<input type="text"/>	<input type="text"/>