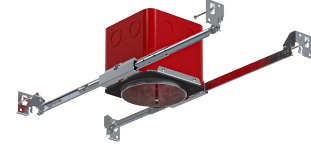


4" New Construction IC Airtight Junction Box for 2-Hr Fire Rated Ceilings



Maximum 2-Hour Fire Rated ceiling assembly can be maintained when installed according to the International Building Code, Section 714.

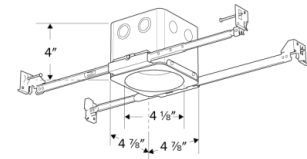
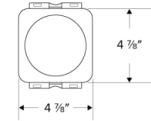
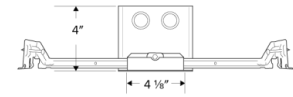
Features

- New Construction IC Airtight Housing **for 2-Hour Fire Rated ceilings**
- Junction Box with hanger bars with quick-connect for easy fixture installation
- Round opening for easy hole cutting
- Maximum 2-Hour Fire Rated ceiling assembly can be maintained when installed according to the [International Building Code, Section 714](#)
- Covered by U.S. Patents
- JA8 2022 E-Compliant
- ETL Listed

Specifications

Voltage	120V
----------------	------

Dimensions



Technical Details

Installation: Hanger bars that can be nailed to joists.

Hanger Bars: Hanger bars with True Nail for easy installation in regular lumber, engineered lumber, and laminated breams. Integral T-bar slots for easy installation in T-Bars. Hanger bars span 24". Score lines allow for tool-free hanger bar size reduction. Integral leveling flange allows for single-person installation while aligning housing with the joists.

Listings:

- IC Rated for direct contact with insulation
- For 2-Hr Fire Rated ceilings
- cUL listed under cUL 514A Standards as a metallic outlet box

Compatible With:

- Koto™ Fixtures

Product Numbers

Item	Description	Voltage
EJB483ICA	4 1/8" O.D. x 4" H	120V