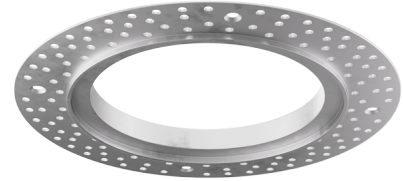


# 4" Round Flush Mount Trim Adaptor

For 4" Pex™ Round Trims and Canless Koto™ Trims.



## Features

- 4" Round extra thin spackle frame for easy mounting.
- Designed to seamlessly flush trims to ceiling.
- Compatible 4" Pex™ Round trims: **ELK4116, ELK4118, ELK4127, ELK4129, ELK4710, ELK4713, ELK4715** Series.
- Compatible 4" Pex™ Canless Koto™ Round trims: **EKCL4116, EKCL4118, EKCL4127, EKCL4129, EKCL4710, EKCL4713, EKCL4715** Series.

## Technical Details

**Construction:** Extra thin spackle frame.

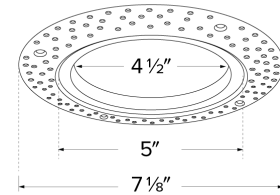
**Installation:** Easy mudding.



**Compatible Trims:** Compatible with 4" Pex Trims and 4" Pex Canless Koto™ Trims.

**Lamp:** Koto™ LED Module and Canless Koto™ LED Module.

## Dimensions



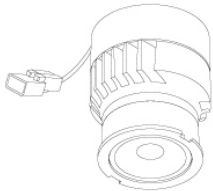
## Product Number

Item	Description
EL4FMR	4" Round Flush Mount Trim Adaptor

# Compatible Products

For use with 4" Pex™ Round Flush Mount Trim Adaptor

## Koto™ LED Module

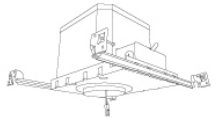


**Koto™ LED Module**  
ELK07 - ELK09

PRODUCT NUMBER BUILDER			
Koto™ LED Module	Lumens	Color Temperature	Beam Angle
ELK			
07	750 lm	27 2700K	(blank) 38° lens (Standard)
09	950 lm	30 3000K	-S 18° lens
		35 3500K	-N 25° lens
		40 4000K	-W 60° lens
		SD Sunset Dimming (ELK09 Only)	

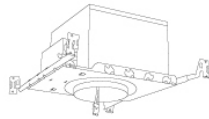
ACCESSORIES	
<b>Lens</b>	<b>Reflectors</b>
EP731C 18° Lens	EP735C 15°
EP732C 25° Lens	EP736C 25°
EP733C 38° Lens	EP737C 38°
EP734C 60° Lens	EP738C 60°
<small>*EP732C, EP733C, EP734C Included</small>	
<b>Secondary Optics</b>	
L45 Hex Louver	
L46 Linear Louver	
L47 Spread Louver	

## 4" Koto™ Dedicated LED ICA Housings



2-Hour Fire Rated  
4" ICA Housing  
**New Construction**

CAT NO.	SPECIFICATIONS
EL48FICA	7 1/2" Height Sound Rated



4" ICA Maximum  
Adjustability Housing  
**New Construction**

CAT NO.	SPECIFICATIONS
EL485ICA	Maximum Adjustability



4" ICA Housing  
**New Construction**

CAT NO.	SPECIFICATIONS
EL490ICA	
EL490ICA-EM5	Emergency Battery Back-up (90 minutes)



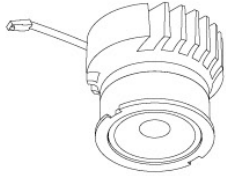
4" ICA Housing  
**Remodel**

CAT NO.	SPECIFICATIONS
EL490RICA	

# Compatible Products

For use with 4" Pex™ Round Flush Mount Trim Adaptor

## Koto™ Architectural LED Light Engine



**Koto™ LED Light Engine**  
ELK19 - ELK21

PRODUCT NUMBER BUILDER			
Koto™ LED Light Engine	Lumens	Color Temperature	Beam Angle
<b>ELK</b>			
<b>19</b>	750 - 850 lm	<b>27D</b> 2700K	(blank) 38° lens (Standard)
<b>21</b>	1100 - 1500 lm	<b>30D</b> 3000K	<b>-S</b> 18° lens
		<b>35D</b> 3500K	<b>-N</b> 25° lens
		<b>40D</b> 4000K	<b>-W</b> 60° lens
		<b>SD</b> Sunset Dimming (ELK19 Only)	

### ACCESSORIES



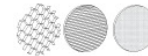
#### Lens

**EP731C** 18° Lens  
**EP732C** 25° Lens  
**EP733C** 38° Lens  
**EP734C** 60° Lens

#### Reflectors

**EP735C** 15°  
**EP736C** 25°  
**EP737C** 38°  
**EP738C** 60°

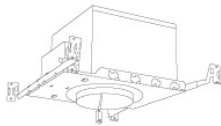
*\*EP732C, EP733C, EP734C Included*



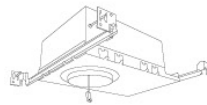
#### Secondary Optics

**L45** Hex Louver  
**L46** Linear Louver  
**L47** Spread Louver

## 4" Koto™ Architectural Recessed Housings



4" High Lumen Maximum Adjustability ICA Housing  
 1500 lm (18.9W) w/ELK21 Series Module  
 Not for use with ELK19 Series Module  
**New Construction**



4" Shallow Maximum Adjustability ICA Housing  
 850 lm (14.7W) w/ELK19 Series Module  
 1100 lm (14.7W) w/ELK21 Series Module  
**New Construction**



4" Standard ICA Housing  
 750 lm (11.8W) w/ELK19 Series Module  
 950 lm (11.8W) w/ELK21 Series Module  
**New Construction**

CAT NO.	SPECIFICATIONS
E4LK79ICAD	120/277V - 0-10V/Triac/ELV

CAT NO.	SPECIFICATIONS
E4LK98ICA	120V - Triac/ELV
E4LK99ICAD	120/277V - 0-10V/Triac/ELV

CAT NO.	SPECIFICATIONS
E4LK87ICA	120V - Triac/ELV
E4LK87ICA-EM1	Emergency Battery Back-Up
E4LK88ICAD	120/277V - 0-10V/Triac/ELV
E4LK88ICAD-EM1	Emergency Battery Back-Up



4" Standard ICA Housing  
 750 lm (11.8W) w/ELK19 Series Module  
 950 lm (11.8W) w/ELK21 Series Module  
**Remodel**

CAT NO.	SPECIFICATIONS
E4LK87RICA	120V - Triac/ELV
E4LK88RICAD	120/277V - 0-10V/Triac/ELV



2-Hour Fire Rated 4" ICA Housing  
 750 lm (11.8W) w/ELK19 Series Module  
 950 lm (11.8W) w/ELK21 Series Module  
**New Construction**

CAT NO.	SPECIFICATIONS
ELK93FICA	120V - Triac/ELV
ELK94TFICAD	120/277V - 0-10V/Triac/ELV