

# GPL SERIES Outdoor Lighting

GPL-18-60W-MCTP

17" MODERN LUCITE POST TOP

**MCTP** Multi Color Temperature & Multi Power/Wattage (Selectable)



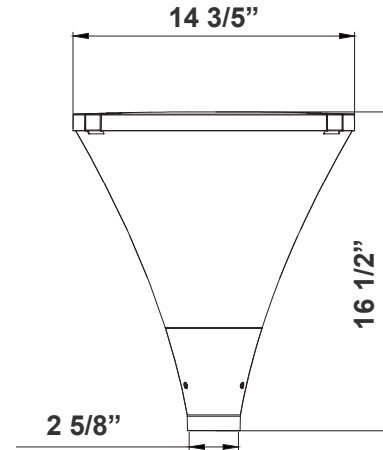
Lucite Post Top Light Designed For Walkways, Entrance Ways, Drives And Other Small-area Lighting Applications Where Low Mounting Heights Are Desirable

Customer Name: \_\_\_\_\_

Project Name: \_\_\_\_\_

Note: \_\_\_\_\_

Type: \_\_\_\_\_



14 3/5" (W) x 16 1/2" (H)  
Inside Diameter: 2 5/8"

## Features

- Corrosion Resistant Aluminum for Exterior
- Samsung 2835 LED Chips
- MCTP: Wattage & CCT Power Selectable Switches Inside Fixture

## Technical Specifications

### Electrical:

- Voltage: 120-277VAC
- Wattage: 18W/30W/45W/60W
- Power Factor: >0.92
- Efficacy: 140 LPW

### Mechanical:

- Powder Coating In Black Finish
- Aluminum Alloy
- Operating Temperature: -40°F to 113°F
- IP Rating: IP66, Wet Locations
- 7 Years Warranty

### Lighting:

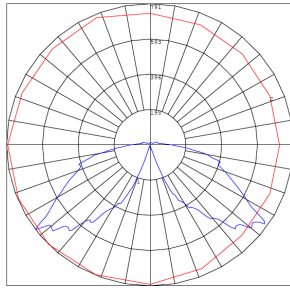
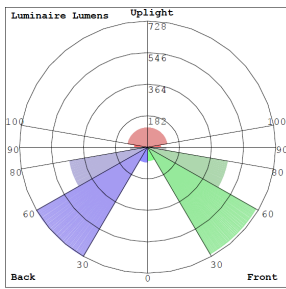
- MCTP: Wattage & CCT Power Selectable Switches Inside Fixture
- Dimmable: 0~10V Dimming
- Lens: Polycarbonate Optical Lens
- Lumens: 8400LM Max.
- Color Temperatures: 3000K/4000K/5000K
- Color Rendering Index: CRI ≥ 70
- Beam Angle : 360°
- Lifespan: 70000 Hours

### Applications:

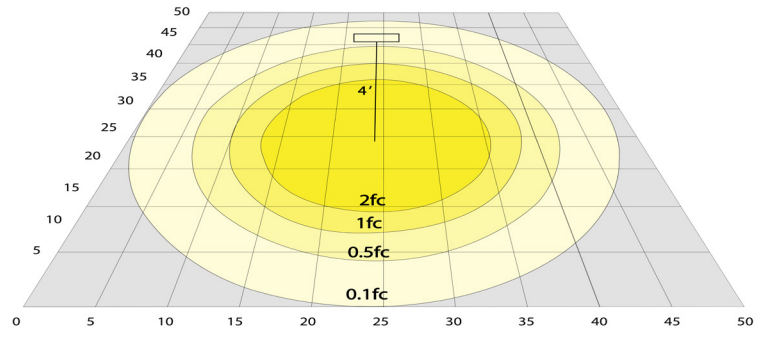
- Lucite Post Top Light Designed For Walkways, Entrance Ways, Drives And Other Small-area Lighting Applications Where Low Mounting Heights Are Desirable



## Photometrics: GPL-18-60W-MCTP



BUD Rating: B1-U3-G2



Area 50'x 50' Mounting Height: 9'

## Other Views:



Side View  
Post is not Incl.



Lens View



Night View  
Post is not Incl.

## Performance Table: GPL-18-60W-MCTP

MODEL NO.	Wattage	Voltage	Lumens	Color Temp.	BUG Rating	LPW
GPL-18-60W-MCTP	18W	120~277V	2520LM	3000K 4000K 5000K	B1-U3-G2	140
	30W		4200LM			
	45W		6300LM			
	60W		8400LM			

## Sample Ordering

Model	Height	Reflector	Watt/Color Temp.
GPL	18	60W	MCTP

## Factory-Installed Options:

Blank = No Option For Accessories  
 OPT-EM-OD1INT = EMERGENCY BACKUP INTERNAL BATTERY, BACK BOX  
 OPT-PC-B = BUTTON PHOTOCELL  
 OPT-CRL-95(BK/GR/SR/WH) = P AINT  
 OPT-SEN-WMC = MICROWAVE BI-LEVEL SENSOR

## FACTORY-INSTALLED OPTION:



OPT-EM-OD1INT  
INTERNAL BATTERY



OPT-SEN-WMC  
MICROWAVE BI-LEVEL SENSOR



OPT-PC-B  
FOR 120V-277V PHOTOCELL



**COLOR CHART:** \* Choose from one of our Premium Colors with no set-up fee.

**Gloss:**



SILVER METALLIC  
70 GLOSS  
T357-GR105



SILVER METALLIC  
30 GLOSS  
T353-GR06



DARK RED 90  
GLOSS  
P009-RD02



INTERNATIONAL  
ORANGE 90  
GLOSS  
T009-OG26



SAFETY ORANGE  
90 GLOSS  
T009-OG01



YELLOW 90  
GLOSS  
T009-YL14



YELLOW 90  
GLOSS  
T009-YL01



TRAFFIC GREEN  
70 GLOSS  
T007-GN16



GREEN 70 GLOSS  
T007-GN13



GREEN 60 GLOSS  
C006-GN03



BLUE 90 GLOSS  
T009-BL01



DARK BLUE 80  
GLOSS  
T008-BL20



RAL 8028 TERRA  
BROWN 90 GLOSS  
C209-BR358

**Hammer:**



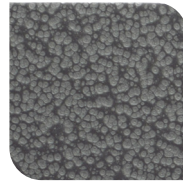
WHITE HAMMER  
T013-WH09



BEIGE HAMMER  
T013-BG38



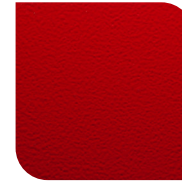
GREY HAMMER  
C013-GR08



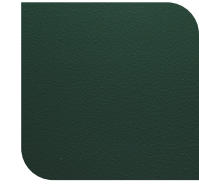
SILVER  
HAMMERTONE  
T064-GR05



BLACK HAMMER  
T013-BK62



RED HAMMER  
T013-RD15



GREEN HAMMER  
T013-GN220



BLUE HAMMER  
T013-BL468



BRONZE HAMMER  
T012-BR161

**Texture:**



WHITE TEXTURE  
C031-WH120



FLINT GRAY  
TEXTURE  
T243-GR522



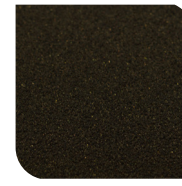
BLACK TEXTURE  
C241-BK109



RED TEXTURE  
T241-RD129



BLUE TEXTURE  
C241-BL544

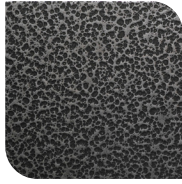


OIL RUBBED  
BRONZE TEXTURE  
T291-BR251

**Vein:**



BLACK/WHITE  
VEIN  
T075-WH34



SILVER VEIN  
T375-BK26



COPPER VEIN  
EXTERIOR  
T075-BK211



GOLD VEIN  
T375-BK10



COPPER VEIN  
T375-BK07

