



LB4R

4" Round Economy Super Thin Recessed LED 11W



Type IC, Wet & Air-Tight

DESCRIPTION

4" Round Recessed LED With Integral Driver In Connection Box
Fits Where No Other Recessed Fixture Can

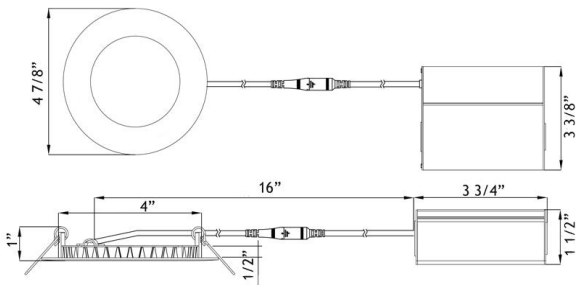
FEATURES & BENEFITS

- 1/2" Deep - Install Directly Under Joists - Maximum Layout Flexibility
- Driver Inside Connection Box - No Junction Box Needed
- Fast & Easy To Install - Save On Labor
- Type IC Rated - No Housing Required

MOUNTING

Cut Hole In Ceiling And Snap Fixture In Opening With Attached Spring Clips. Ceiling Clearance Required For Driver: 2 1/2"

DIMENSIONS: ID 4" OD 4 7/8" Cut Out 4" to 4 1/4"



120V TRIAC Dimmable

Driver Included



Optional 120V - 347V

Driver 0-10V Dimmable
Order Separately as
[model # LLL-LD1535TB](#)



AVAILABLE TRIMS



White



Black

ORDERING GUIDE Example: **LB4R / 30K / WH**

	CCT	Trim Finish	
LB4R	/	/	
3000K	30K	WH	White
4100K	41K	BK	Black
DTW 30-20K	32K	Dim to Warm 3000K to 2000K	

Project: _____

Location: _____

Model #: _____ Qty: _____

Notes: _____

SPECIFICATION	
Applications	Recessed Ceiling, Showers & Soffits
Energy Used	11 W
Colour Temperature	3000 4100 Dim to Warm 3000K to 2000K
Light Output	700 730 700
Halogen Equivalent	65 W
Beam Angle	110°
CRI	80
Default Driver Input	120V AC Triac Dimmable
Optional Driver Input	120V-347V AC 0-10V Dimmable
Junction Box Wire Capacity	Max 5 No 12 AWG or 8 No 14 AWG
Power Factor	0.95
Approved Location	Insulated Ceiling, Wet & Damp Locations
IP Rating	IP 54
Air Tight	Yes
Ambient Temperature	-40°F (-40°C) to +104°F (+40°C)
Projected Life	70% Light Output at 36,000 Hours
Certification	cULus, Energy Star (30K and 41K only)
Warranty	5 Year

ACCESSORIES

Sold Separately



Low Voltage Extension Cables 10 ft FT4 / CMR rated
[model # EXC10](#)



[26" Long Flat Rough-In Plate model # RIP4](#)



[13" Long Flat Rough-In Plate model # MP4-2](#)



[13" Long Flanged Rough-In Plate model # MP4](#)



[4 1/8" Hole Flanged with Hanger Bars model # FRP4](#)



Goof Ring OD 5 3/4"

[White model # GR4](#) [Black model # GR4-BK](#)



Emergency Driver 8W 120-347V input

[model # BLD-HM08D-YYY](#)

COMPLIANCE



Type IC
Air-Tight
Wet Location

Lotus LED Lights USA

250 H Street # 301, Blaine WA 98230 tel 360-200-5500
Hainesport NJ, Naples FL, Vancouver WA

www.LotusLEDLights.com

mailing addresses
warehouses

Lotus LED Lights CANADA

1080 Cliveden Ave # 6, Delta BC V3M 6G6 tel 604-538-3090
Delta BC & Mississauga ON