

NEFLINTW-R6MPW

6" E-Series FLIN Round LED Downlight with Selectable CCT

Source: 13.5W

Up to 1300lm

Type

Project

Catalog No.

Notes

PRODUCT DESCRIPTION

E-Series FLIN is a thin recessed LED designed for easy installation into new construction or remodel applications. Luminaires include a selectable color temperature switch located on the junction box of each luminaire with a quick connect that allows for easy disconnect and mounting in the ceiling.

FEATURES

- No housing required and includes junction box with class 2 driver
- Quick installation and cost savings
- Junction box includes kelvin temperature switch
- IC Air-Tight rated
- Field selectable color temperature
- Triac or ELV dimming
- cETLus Listed for Wet Locations
- 5-year limited warranty

SPECIFICATION

Construction: Die-cast aluminum luminaire with spring clips for easy installation. Gasket included for air-tight and wet location listing without additional caulking.

Air Flow Restriction: Luminaire has factory installed gasket to restrict airflow from room into ceiling plenum to <2CFM (cubic feet per minute) in accordance with ASTM E283 Air-Tight requirements.

Lens: Regressed lens with sharp baffle cuts reduces aperture brightness. Special polymer lens produces more usable light and lumens per watt.

Junction Box: Prewired junction box includes quick connect to LED fixtures for ease of installation. Junction box includes two 1/2" trade size and two 3/8" trade size knockouts and snap on cover. Maximum of 4 No. 12 AWG through branch circuit conductor suitable for 90°C permitted in box. [Fixture wire length: 5" and Junction box wire length: 9"]

Mounting: No housing is required, two tensions steel spring clips secure luminaires to the ceiling. Luminaires accept ceiling thicknesses from 3/8" to 5/16". New construction frame-in kits are available, see accessories.

Minimum clearance: "IC" Insulated ceiling housings are direct contact rated; no minimum clearance is required.

ELECTRICAL

Voltage: 120VAC or 120-277VAC
Lumens / Wattage: Up to 1300lm / 13.5W
Color Temperature: Selectable CCT (2700K / 3000K / 3500K / 4000K / 5000K; preset at 3000K)
Color Rendering Index: 90+ CRI
Beam Spread: 115° Wide Flood
Operating Temperature: 0°C to 35°C
Lifetime: 50,000 hours @ L70
Dimming: Dimmable down to 10% with Triac or ELV dimmer [Click Here](#) or check complete dimmer list at www.NoraLighting.com in the "Compatibility" page under "Resources" tab

OPTIONAL ACCESSORIES

NEFLINTW-6OR-MPW: Oversize Ring
NF-R246: Universal New Construction Frame-In
NEFLINTW-EW-4: 4' Quick Connect Linkable Cable
NEFLINTW-EW-20: 20' Quick Connect Linkable Cable

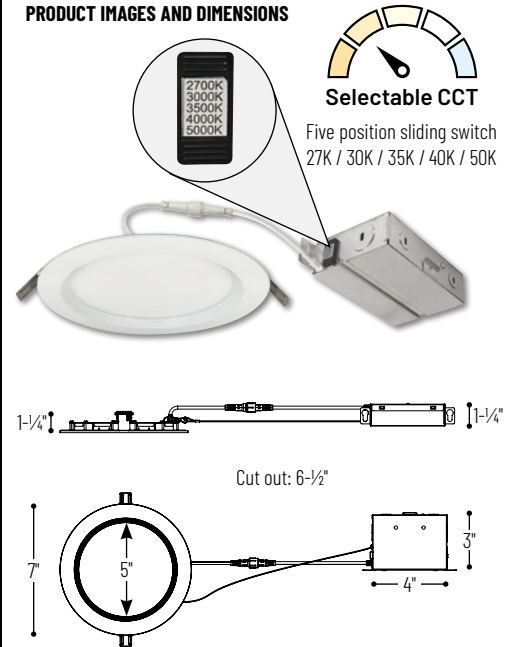
LABELS AND LISTINGS

- cETLus Listed for Wet location
- ENERGY STAR certified
- Certified to the high efficacy requirements of California Title 24 JA8-2019
- [5-Year Limited Warranty](#)
- FCC Compliant



Performance Data		
Part Number	Lumens	CCT
NEFLINTW-R6MPW	1199lm	2700K
NEFLINTW-R6MPW	1220lm	3000K
NEFLINTW-R6MPW	1289lm	3500K
NEFLINTW-R6MPW	1306lm	4000K
NEFLINTW-R6MPW	1323lm	5000K

PRODUCT IMAGES AND DIMENSIONS



6" E-Series FLIN LED Round Downlight with Selectable CCT

Input Voltage

NEFLINTW-R6MPW = 120V input
 NEFLINTW-R6MPWLE4 = 120-277V input

Optional Accessories

Description

NEFLINTW-6OR-MPW = Oversize Ring
 NF-R246 = Universal New Construction Frame-In
 NEFLINTW-EW-4 = 4' Quick Connect Extension Cable
 NEFLINTW-EW-20 = 20' Quick Connect Extension Cable

Example: NEFLINTW-R6MPW = 6" Round E-Series FLIN LED Downlight, Selectable CCT (2700K / 3000K / 3500K / 4000K / 5000K), Matte Powder White finish, 120V input

NEFLINTW-R6MPW

6" E-Series FLIN LED Downlight Accessories

Type _____
Project _____
Catalog No. _____
Notes _____



Oversize Ring for Round

NEFLINTW-60R-MPW

Oversize ring covers ceiling cut-outs up to 7-1/4"



Quick Connect Extension Cables

NEFLINTW-EW-4

4'

NEFLINTW-EW-20

20'

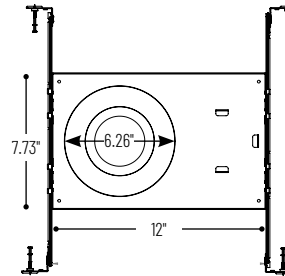
Used to extend the length between luminaire and pre-wired junction box.



Universal New Construction Frame-In

NF-R246

Universal new construction frame-in can be used to assist installing can-less recessed downlighting.



PHOTOMETRICS

6" E-Series FLIN Round LED Downlight with Selectable CCT

Type

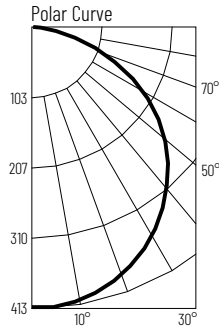
Project

Catalog No.

Notes

Test Information

Test Number: NTR1923R1
 Part Number: NEFLINTW-R6MPW
 Beam Spread: 115° Wide Flood
 Lumens: 1199lm
 Wattage: 13.8W
 Efficacy: 87lpw
 CCT / CRI: 2700K / 90 CRI
 Spacing Criteria (0°-180°): 1.28
 Spacing Criteria (90°-270°): 1.28



Illuminance at a Distance

Distance from Luminaire	FC at Nadir	Beam Diameter
4'	25.7fc	12'-6"
6'	11.4fc	18'-10"
8'	6.4fc	25'
10'	4.1fc	31'-4"
12'	2.9fc	37'-6"

Zonal Lumen Summary

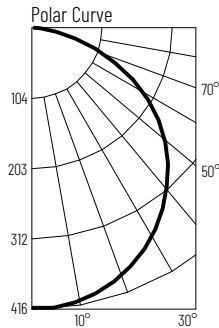
Zone	Lumens	% Luminaire
0-30	266	22.2
0-40	444	37
0-60	921	76.8
0-90	1199	100
90-180	0	0
0-180	1199	100

Candela Table

Vertical Angles	Candela
0	411
5	408
15	395
25	370
35	331
45	282

Test Information

Test Number: NTR1924R1
 Part Number: NEFLINTW-R6MPW
 Beam Spread: 115° Wide Flood
 Lumens: 1220lm
 Wattage: 13.68W
 Efficacy: 89lpw
 CCT / CRI: 3000K / 90 CRI
 Spacing Criteria (0°-180°): 1.28
 Spacing Criteria (90°-270°): 1.28



Illuminance at a Distance

Distance from Luminaire	FC at Nadir	Beam Diameter
4'	25.9fc	12'-10"
6'	11.5fc	19'-2"
8'	6.5fc	25'-8"
10'	4.2fc	32'-1"
12'	2.9fc	38'-6"

Zonal Lumen Summary

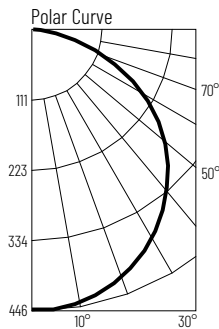
Zone	Lumens	% Luminaire
0-30	268	22
0-40	449	36.8
0-60	934	76.6
0-90	1220	100
90-180	0	0
0-180	1220	100

Candela Table

Vertical Angles	Candela
0	415
5	412
15	399
25	374
35	336
45	288

Test Information

Test Number: NTR1925R1
 Part Number: NEFLINTW-R6MPW
 Beam Spread: 115° Wide Flood
 Lumens: 1289lm
 Wattage: 13.37W
 Efficacy: 96lpw
 CCT / CRI: 3500K / 90 CRI
 Spacing Criteria (0°-180°): 1.28
 Spacing Criteria (90°-270°): 1.28



Illuminance at a Distance

Distance from Luminaire	FC at Nadir	Beam Diameter
4'	27.7fc	12'-6"
6'	12.3fc	18'-8"
8'	6.9fc	24'-11"
10'	4.4fc	31'-2"
12'	3.1fc	37'-5"

Zonal Lumen Summary

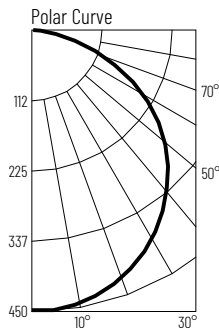
Zone	Lumens	% Luminaire
0-30	286	22.2
0-40	478	37.1
0-60	991	76.9
0-90	1289	100
90-180	0	0
0-180	1289	100

Candela Table

Vertical Angles	Candela
0	442
5	439
15	425
25	398
35	357
45	303

Test Information

Test Number: NTR1926R1
 Part Number: NEFLINTW-R6MPW
 Beam Spread: 115° Wide Flood
 Lumens: 1306lm
 Wattage: 13.43W
 Efficacy: 97lpw
 CCT / CRI: 4000K / 90 CRI
 Spacing Criteria (0°-180°): 1.28
 Spacing Criteria (90°-270°): 1.28



Illuminance at a Distance

Distance from Luminaire	FC at Nadir	Beam Diameter
4'	28fc	12'-6"
6'	12.5fc	18'-10"
8'	7fc	25'-1"
10'	4.5fc	31'-4"
12'	3.1fc	37'-7"

Zonal Lumen Summary

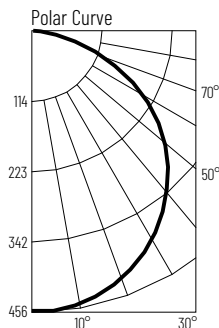
Zone	Lumens	% Luminaire
0-30	290	22.2
0-40	484	37.1
0-60	1004	76.9
0-90	1306	100
90-180	0	0
0-180	1306	100

Candela Table

Vertical Angles	Candela
0	449
5	445
15	431
25	403
35	361
45	308

Test Information

Test Number: NTR1927R1
 Part Number: NEFLINTW-R6MPW
 Beam Spread: 115° Wide Flood
 Lumens: 1323lm
 Wattage: 13.82W
 Efficacy: 96lpw
 CCT / CRI: 5000K / 90 CRI
 Spacing Criteria (0°-180°): 1.28
 Spacing Criteria (90°-270°): 1.28



Illuminance at a Distance

Distance from Luminaire	FC at Nadir	Beam Diameter
4'	28.4fc	12'-6"
6'	12.6fc	18'-8"
8'	7.1fc	25'
10'	4.6fc	31'-2"
12'	3.2fc	37'-6"

Zonal Lumen Summary

Zone	Lumens	% Luminaire
0-30	356	26.9
0-40	586	44.3
0-60	1048	79.2
0-90	1323	100
90-180	0	0
0-180	1323	100

Candela Table

Vertical Angles	Candela
0	455
5	452
15	437
25	410
35	367
45	312