

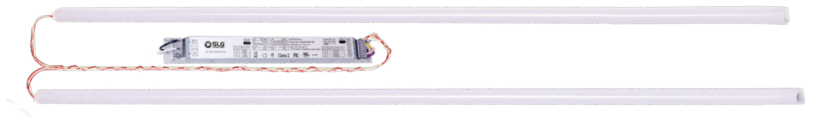
# RBK G1

## LED Retrofit Light Bar Kit Gen 1 **CONTRACTOR XP**

Due to continuous product improvements, specification and/or equipment updates may change without notice.



**RBK 2B2F**  
Magnetic Retrofit Light Bar Kit.



**RBK 2B4F**  
Magnetic Retrofit Light Bar Kit.

(Images are shown for illustration purposes only)

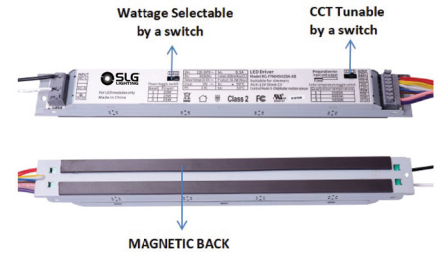
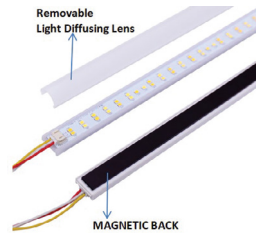
### Specifications

#### Efficacy

Up to 152 LM/W

#### Mounting

Magnetic light bar for quick installation.



### ORDERING GUIDE

Series	Bars/Length	Selectable Lumen Driver	Gen	Voltage	CCT
• RBK LED Retrofit Light Bar Kit	• <b>2B2F</b> 2 Bars - 2'	• <b>LS35</b> 2,200 / 2,950 / 3,750 Lm 15 / 20 / 25 W	• <b>G1</b> First Generation	• <b>BLANK</b> 120-277 V, 0-10V Dimming	• <b>FSK</b> 3500K/ 4000K/ 5000K
	• <b>2B4F</b> 2 Bars - 4'	• <b>LS50</b> 3,000 / 4,260 / 5,425 Lm 20 / 28 / 35 W			
	• <b>4B4F</b> 4 Bars - 4'	• <b>LS70</b> 4,750 / 5,810 / 7,000 Lm 30 / 38 / 46 W			

### ACCESSORIES

Emergency Backup	Mounting Kit
• <b>EMA-DH25D-UNV-170</b> 25 W Emergency Backup Battery/ Driver	• <b>RBK-MKT</b> RBK Mounting Kit - 4 pc end caps and 2 pc center clip

## Configuration Chart

Replacement	SLG Part Number	# Bars	Bar Length	Selectable Wattage	Selectable Lumens	Selectable CCT
2' X 2' Troffer	RBK 2B2F LS35 G1 FSK	2	1.8'	15 W	2,200 Lm	3500K 4000K 5000K
				20 W	2,950 Lm	
				25 W	3,750 Lm	
2' X 4' Troffer	RBK 2B4F LS50 G1 FSK	2	3.5'	20 W	3,000 Lm	
				28 W	4,260 Lm	
				35 W	5,425 Lm	
2' X 4' Troffer	RBK 2B4F LS70 G1 FSK	2	3.5'	30 W	4,750 Lm	
				38 W	5,810 Lm	
				46 W	7,000 Lm	
2' X 4' Troffer	RBK 4B4F LS70 G1 FSK	4	3.5'	30 W	4,750 Lm	
				38 W	5,810 Lm	
				46 W	7,000 Lm	

## Specifications

### Housing/Construction

Linear light bar has frosted diffused lens and a magnetic mounting strip across the back side.

### Operating Temperature

Suitable for use in -20°C to +40°C (-4°F to 104°F).

### Mounting

Magnetic retrofit existing fixture.

### Efficacy

Up to 152 lumens per watt.

### CCT and CRI

CRI>80 Selectable CCT: 3500K, 4000K, or 5000K

### Lumen Output

**LS35 / 25W Driver** Field selectable: 2,200 - 3,750 Lm.

**LS50 / 35W Driver** Field selectable: 3,000 - 5,425 Lm.

**LS70 / 46W Driver** Field selectable: 4,750 - 7,000 Lm.

### Lumen Maintenance

L70 Rating of 60,000 hours

### Warranty

5-year limited warranty. Comprehensive warranty terms can be located on [www.slgus.com](http://www.slgus.com).

### Electrical

Standard 120V - 277V

Dimming 0-10V. 50/60HZ input frequency.

### Certifications

ETL Listed: UL Listed for damp locations. Design Lights Consortium® (DLC) 5.1 Premium listed. Adheres to LM79, LM80, and TM 21 industry standards.

## DLC Product ID

RBK 2B2F LS35 G1 FSK	S-JFSM1Z
RBK 2B4F LS50 G1 FSK	S-65FX5J
RBK 2B4F LS70 G1 FSK	S-3W8QSF
RBK 4B4F LS70 G1 FSK	S-205JNN

## Dimensions

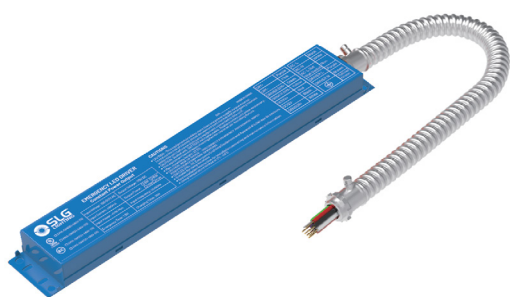
### Lightbar 2'



### Lightbar 4'



## Emergency Backup



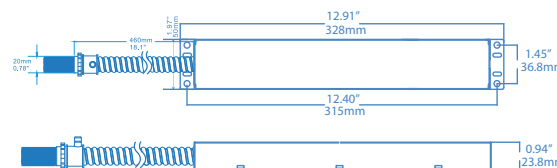
### CERTIFICATES



**HIGH VOLTAGE OUTPUT**  
170VDC

### DIMENSION

L\*W\*H=12.91"x1.97"x0.94"(328x50x23.8mm)  
(mounting center 12.4")



## SPECIFICATIONS

Model No.	EMA-DH25D-UNV-170
Output Power	25W
Output Voltage	170V DC
Input Voltage	100-347V AC, 50/60HZ
Input Power	12W Max.
Input Current	≤100mA
Battery Type	Lithium
Recharge Time	≥24 Hours
Emergency Time	≥90 minutes
Ambient Temp.	5°C ~50°C(32°F~122°F°)
Luminaire Power	0-10V dim luminaires≤100W Non 0-10V dim luminaires≤25W

### OPERATION

**AC Operation:** AC power is present. The AC driver operates the LED load as designed. The emergency driver is charging in a standby mode. The charging indicator will be lit, showing that the battery is charging.

**Emergency Operation:** When the AC power goes out, the emergency driver detects the AC power outage and automatically switches to the working emergency mode. The red LED light on indicates that it is discharging, the red LED flashes to indicate low battery power. The red LED light off indicates that the discharge is complete. When the AC power is restored, the emergency driver backs to AC power working and starts recharging.

#### Malfunction Operation:

When the emergency LED driver faults, the yellow LED on

AC Power ON

Charging

Full-charged

AC Power OFF

Discharging

Emergency Mode

Indicator Light Introduction		
<ul style="list-style-type: none"> <li>① Green/Flashing: Charging</li> <li>② Green/ON: Full-charged</li> <li>③ Red/ON: Discharging(emergency mode)</li> <li>④ Red/Flashing: Low battery</li> <li>⑤ Yellow: Error</li> </ul>	Green flashing Charging ①	Green ON Full-charged ②
	Red flashing Low battery ④	Red ON Discharging ③
	Yellow ON Error ⑤	

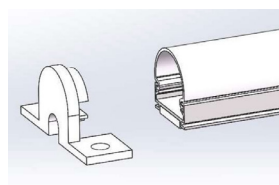
**Test Switch Introduction**

① Press the test switch to confirm whether emergency function is normal

② During Emergency Mode, Press test switch twice to cut off the emergency output and enter Shipping Mode

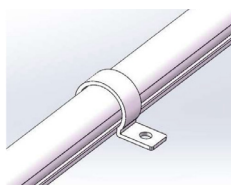
Press the test switch  
Green turns to Red  
Emergency function is normal

## Mounting Kit



### End caps

4 pcs to cap off light bars.



### Clips

2 pcs for additional securing the light bar.