

ES-FSCOBWW+W-24-2-DTW

COB LED Tape Light Dim To Warm 24V 4.6W/ft 10mm CRI90+ IP20

Project: _____

Location: _____

Model # : _____ Qty: _____

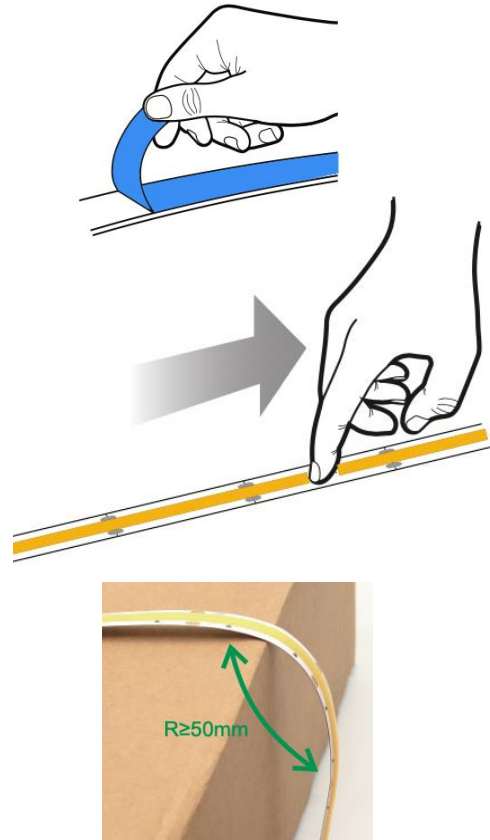
Notes: _____

DESCRIPTION

- High Quality COB LED flexible strip 24V DC for dry locations
- Dim To Warm 3000K to 1800K
- No additional controllers needed for changing the light temperature
- Seamless linear light - no diffused cover needed
- No hotspots and with CRI 90+ for vibrant colors
- Reinforced design for stable performance when bending & twisting
- 3 oz copper PCB and real gold wires for superb light maintenance
- Wires on both ends. Double sided adhesive 3M tape

INSTALLATION INSTRUCTIONS

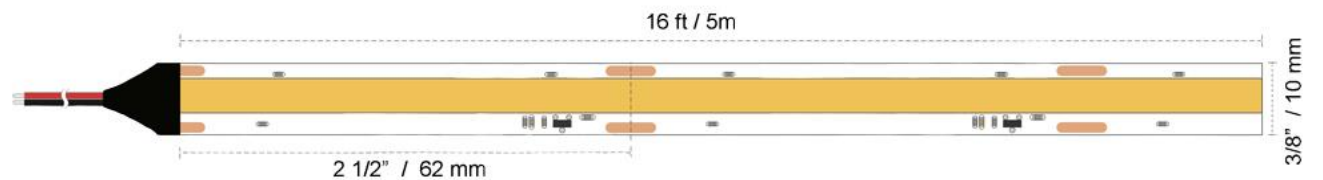
1. Remove backing plastic to reveal adhesive tape
2. Press LED tape firmly onto clean smooth surface that adsorbs heat, such as metal or glass. Start at one end and gradually move along surface, making sure tape is smooth and not creased
3. Cut on trim marks every 2 1/2"
4. Minimum Bending Radius 2"



SPECIFICATION	
Applications	Undercabinet, Cove, Valance, Decorative
Power	4.6 W/ft
Input	24V DC
CCT	Dim to Warm 3000K to 1800K
Light output per foot	350 lm
Efficiency	78 lm/W
CRI	90 +
Available Length	16 ft (5 m)
Maximum Connection Length	16 ft (5 m)
Width	3/8" (10 mm)
Beam Angle	135°
Dimmable	Yes
LED Operation Type	Constant Voltage
IP Grade	IP 20
Approved Location	Dry Location
Operating Temperature	-13°F (-25°C) to +113°F (+45°C)
Cutable Increment	2 1/2" (62 mm)
Minimum Bending Radius	2" (50 mm)
LEDs type	COB
Adhesive Tape Type	3M 300SE
Projected Life	70% Light Output at 50,000 Hours
Certification	c UL us
Warranty	5 Year Indoor / 3 Year Outdoor

WARNING

LED tape gets hot. Mounting firmly and securely on smooth and thermo conductive surface such as metal or glass is critical for proper thermal management and long life
 Not following these instructions voids the warranty



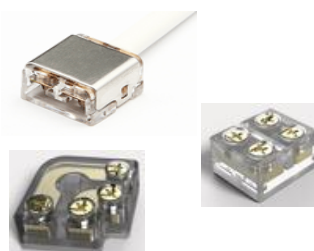
ORDERING GUIDE

ES-FSCOBWW+W-24-2-DTW

Available in 16 ft (5 m) rolls only

ACCESSORIES

Sold Separately



[Tape to Wire Straight Screw Connector # SC-8-10-TW](#)

[Tape to Tape Straight Screw Connector # SC-8-10-TT-1](#)

[Tape to Tape 90° L-shape Screw Connector # SC-8-10-TT-9](#)

Lotus LED Lights USA

250 H Street # 301, Blaine WA 98230 tel 360-200-5500
 Hainesport NJ, Naples FL, Vancouver WA

www.LotusLEDLights.com

mailing addresses
 warehouses

Lotus LED Lights CANADA

1080 Cliveden Ave # 6, Delta BC V3M 6G6 tel 604-538-3090
 Delta BC & Mississauga ON