

# LBL-COB-320-24V-8MM-100FT

## COB LED Strip 24V 3W/ft Bulk Package IP20

Project: \_\_\_\_\_

Location: \_\_\_\_\_

Model # : \_\_\_\_\_ Qty: \_\_\_\_\_

Notes: \_\_\_\_\_

### DESCRIPTION

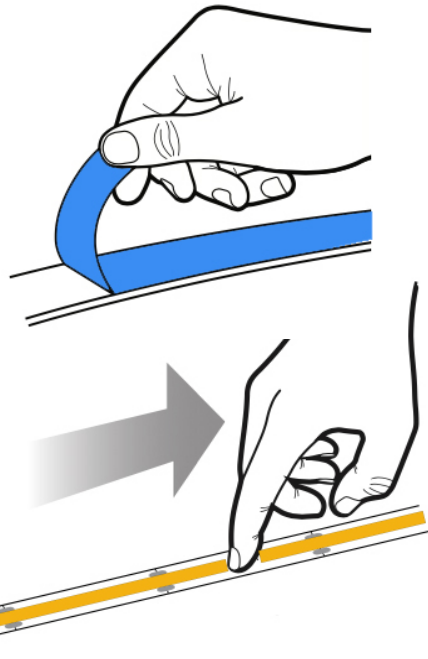
COB LED flexible strip 24V for dry locations  
 Seamless linear light - no diffused cover needed  
 No hotspots and with CRI 90+ for vibrant colors  
 Higher efficiency and more flexible than SMD LED strips  
 Easy to install and low maintenance  
 Double sided adhesive 3M tape and wires on both ends  
 Package includes **3 pieces of 33 ft** (10 meter) each  
 Voltage drop: at ft 1 - 24V DC, at ft 16 - 22.6V, at ft 33 - 20.8V

### APPLICATIONS

Cove and decorative lighting, path and contour marking  
 Undercabinet and valance use

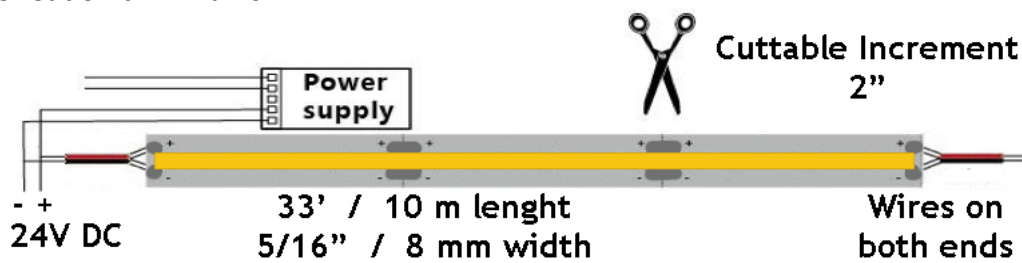
### INSTALLATION INSTRUCTIONS

1. Remove backing paper to reveal adhesive tape



2. Press LED tape firmly onto clean smooth surface that adsorbs heat, such as metal or glass. Start at one end and gradually move along surface, making sure tape is smooth and not creased

3. Cut on trim marks



The whole 33 ft / 10 meter strip is one piece - no soldering points

### WARNING

LED tape gets hot. Mounting firmly and securely on smooth and thermo conductive surface such as metal or glass is critical for proper thermal management and long life.

Not following these instructions voids the warranty

To reduce voltage drop and ensure similar brightness everywhere, powering from both ends is possible as well.

### ORDERING GUIDE

3000K **LBL-COB-320-24V-8MM-30K-100FT**  
 4000K **LBL-COB-320-24V-8MM-40K-100FT**

Package includes 3 pieces of 33 ft / 10 meters, total 99 ft / 30 meters

SPECIFICATION (tolerance +/- 10%)	
Applications	Undercabinet, Cove, Valance, Decorative
Color Temperature (K)	3000   4000
Power	3 W/ft
Efficiency	100 lm/W
Light output	300 lm/ft
Length per roll	33 ft / 10 m - 3 rolls per package - total 99 ft / 30 m
Maximum Length	33 ft / 10 meters
Width	5/16" / 8 mm
Power per Max Length	96 W
Lumen per Max Length	9,600 lm
Beam Angle	180°
CRI	90 +
Input	24V DC
Dimmable	Yes
LED Operation Type	Constant Voltage
IP Grade	IP 20
Approved Location	Indoor / Dry Location
Ambient Temperature	-4°F (-20°C) to +104°F (+40°C)
Cuttible Increment	2" / 5 cm
Adhesive Tape Type	3M 300SE
Projected Life	70% Light Output at 20,000 Hours
Certification	cETLus
Warranty	3 Year

### ACCESSORIES

Sold Separately



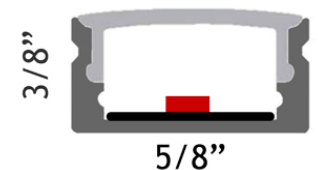
cULus Class 2 Drivers 60W, 96W, 192W, 288W  
 120V-277V in, 24V DC out. **5-in-1 Dimmable**  
 Built-In Wiring Compartments. Wet location



cULus Class 2 Driver model # **LBL-DC24V96W**  
 120V in, 24V DC out, 96W. Triac / 0-10V Dimmable



Aluminum Channel  
 3.3 ft (1 m) long



Silver with white diffuser model # **XC610**  
 Black with black diffuser model # **XC610-BK**



Strip Connector 8mm no wires model # **LCS-0-8MM**  
 Single Connector with 6" wire model # **LCS-1-8MM**  
 Two Connectors with 6" wire model # **LCS-2-8MM**

Note: All 3 connectors fit inside the channel

### Lotus LED Lights USA

250 H Street # 301, Blaine WA 98230 tel 360-200-5500  
 Hainesport NJ, Naples FL, Dallas TX, Vancouver WA

[www.LotusLEDLights.com](http://www.LotusLEDLights.com)

mailing addresses  
 warehouses

### Lotus LED Lights CANADA

702 Chester Rd, Delta BC V3M 6J1 tel 604-538-3090  
 Delta BC & Mississauga ON