



# LBL-COB-384-24V-8MM

## COB LED Strip 24V 3W/ft 16ft IP20

Project: \_\_\_\_\_

Location: \_\_\_\_\_

Model # : \_\_\_\_\_ Qty: \_\_\_\_\_

Notes: \_\_\_\_\_

### DESCRIPTION

COB LED flexible strip 24V for dry locations  
 Seamless linear light - no diffused cover needed  
 No hotspots and with CRI 90+ for vibrant colors  
 Higher efficiency and more flexible than SMD LED strips  
 Easy to install and low maintenance  
 Double sided adhesive 3M tape and wires on both ends

### APPLICATIONS

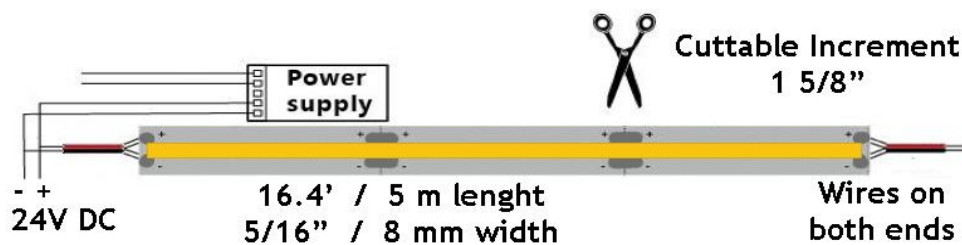
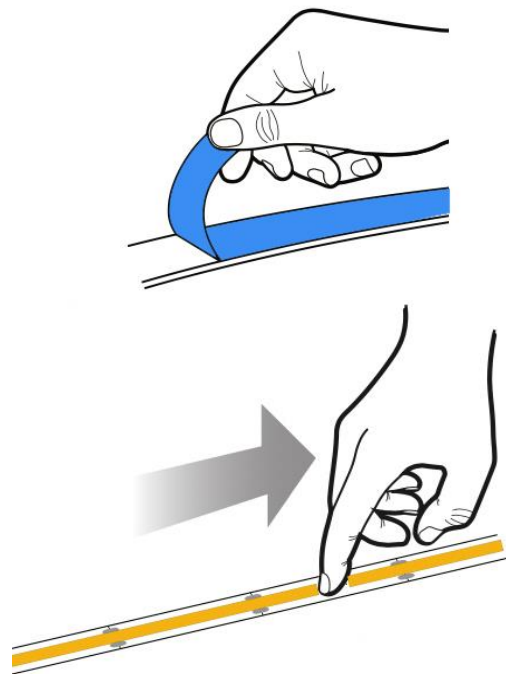
Cove and decorative lighting, path and contour marking  
 Undercabinet and valance use  
 Suitable for installation in the storage area of a clothes closet

### INSTALLATION INSTRUCTIONS

1. Remove backing paper to reveal adhesive tape

2. Press LED tape firmly onto clean smooth surface that adsorbs heat, such as metal or glass. Start at one end and gradually move along surface, making sure tape is smooth and not creased

3. Cut on trim marks



SPECIFICATION (tolerance +/- 10%)	
Applications	Undercabinet, Cove, Valance, Decorative
Color Temperature (K)	2700   3000   4000   5000
Power	3 W/ft
Efficiency	100 lm/W
Light output	300 lm/ft
Length per roll	16.4 ft / 5 meters
Maximum Length	16.4 ft / 5 meters
Width	5/16" / 8 mm
Power per Max Length	50 W
Lumen per Max Length	5,000 lm
Beam Angle	180°
CRI	90 +
Input	24V DC
Dimmable	Yes
LED Operation Type	Constant Voltage
IP Grade	IP 20
Approved Location	Indoor / Dry Location / Clothes Closets
Ambient Temperature	-4°F (-20°C) to +104°F (+40°C)
Cuttable Increment	1 5/8"
LEDs density	384 LEDs / meter
Adhesive Tape Type	3M 300SE
Projected Life	70% Light Output at 20,000 Hours
Certification	cETLus
Warranty	3 year - when installed with a Lotus LED Lights driver
	The warranty is void if installed with an LED driver from another manufacturer

### WARNING

**LED tape gets hot. Mounting firmly and securely on smooth and thermo conductive surface such as metal or glass is critical for proper thermal management and long life. Not following these instructions voids the warranty**

### ORDERING GUIDE

2700K	<b>LBL-COB-384-24V-8MM-27K</b>
3000K	<b>LBL-COB-384-24V-8MM-30K</b>
4000K	<b>LBL-COB-384-24V-8MM-40K</b>
5000K	<b>LBL-COB-384-24V-8MM-50K</b>

### ACCESSORIES

Sold Separately



Strip Connector 8mm no wires model # **LCS-0-8MM**

Single Connector with 6" wire model # **LCS-1-8MM**

Two Connectors with 6" wire model # **LCS-2-8MM**

[Tape to Wire Straight Screw Connector # SC-8-10-TW](#)

[Tape to Tape Straight Screw Connector # SC-8-10-TT-1](#)

[Tape to Tape 90° L-shape Screw Connector # SC-8-10-TT-9](#)

Note: All connectors fit inside the channels we offer

### Lotus LED Lights USA

250 H Street # 301, Blaine WA 98230 tel 360-200-5500  
 Hainesport NJ, Naples FL, Vancouver WA

[www.LotusLEDLights.com](http://www.LotusLEDLights.com)

mailing addresses  
 warehouses

### Lotus LED Lights CANADA

1080 Cliveden Ave # 6, Delta BC V3M 6G6 tel 604-538-3090  
 Delta BC & Mississauga ON