



## DESCRIPTION

**User selectable 2700K - 3000K - 3500K - 4000K - 5000K**

by the Lotus LED drivers' 5CCT switch

No hotspots and with CRI 90+ for vibrant colors

Wires on both ends. Double sided adhesive 3M tape

## USE ONLY WITH LOTUS DRIVERS:

[SVD-24060-J-5CCT](#)

60W: You can connect one 16-ft roll

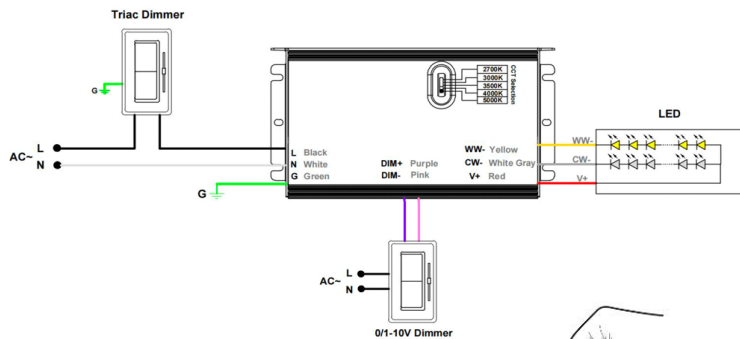
[SVD-24096-J-5CCT](#)

96W: You can connect two 16-ft rolls in parallel

Red wire to driver's Red V+

Yellow wire to driver's Yellow WW-

White wire to driver's White Grey CW-



## INSTALLATION INSTRUCTIONS

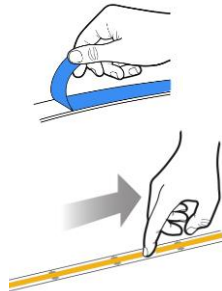
1. Remove backing plastic to reveal adhesive tape

2. Press LED tape firmly onto clean smooth

surface that adsorbs heat, such as metal or glass.

Start at one end and gradually move along surface,

making sure tape is smooth and not creased

**LBL-COB-TW5CCT-IP20****5CCT 2700-5000K COB LED Tape 24V IP20**

Project: \_\_\_\_\_

Location: \_\_\_\_\_

Model # : \_\_\_\_\_

Qty: \_\_\_\_\_

Notes: \_\_\_\_\_

SPECIFICATION	
Applications	Undercabinet, Cove, Valance, Decorative
Power	3 W/ft max   2.5W/ft average
Input	24V DC constant voltage
CCT (K)	2700   3000   3500   4000   5000
Light output per foot (lm)	170   177   185   193   206
Efficiency (lm/W)	68   69   73   76   82
CRI	90 +
Maximum Connection Length	16 ft (5 m)
Width	3/8" (10 mm)
Beam Angle	130°
Dimmable with Lotus drivers	TRIAC, 0-10V, 1-10V, Pot., 10V PWM
IP Grade	IP 20
Approved Location	Dry Location
Operating Temperature	-13°F (-25°C) to +113°F (+45°C)
Cuttable Increment	1" (26 mm)
Minimum Bending Radius	3/4" (20mm)
LEDs type	COB 608 chips per meter
Adhesive Tape Type	3M
Projected Life	70% Light Output at 50,000 Hours
Certification	c UL us
Warranty	5 year indoor / 3 year outdoor
	The warranty is void if installed with an LED driver from another manufacturer

**WARNING**

**LED tape gets hot. Mounting firmly and securely on smooth and thermo conductive surface such as metal or glass is critical for proper thermal management or glass is critical for proper thermal management and long life.**

**Not following these instructions voids the warranty**



## ORDERING GUIDE

<b>LBL-COB-TW5CCT-IP20-16FT</b>	16.4 ft / 5 m roll
<b>LBL-COB-TW5CCT-IP20-100FT</b>	100 ft / 30 m roll

## ACCESSORIES

Sold Separately

3 PIN CONNECTORS - SOLD IN BAG OF 5

Tape to Wire # **PJ1-LJ00-0560**Tape to Tape with wire between # **PJ1-LJ00-0561**Tape to Tape without wire # **PJ1-LJ00-0562**

## Lotus LED Lights USA

250 H Street # 301, Blaine WA 98230 tel 360-200-5500

Hainesport NJ &amp; Ferndale WA

[www.LotusLEDLights.com](http://www.LotusLEDLights.com)

mailing addresses

warehouses

## Lotus LED Lights CANADA

1080 Cliveden Ave # 6, Delta BC V3M 6G6 tel 604-538-3090

Delta BC &amp; Mississauga ON