

SENIK FLEX SERIES TAPE LIGHT

24V DC RGBW Flexible Optic Wall Washer

Senik Flex is a high performance optic based flexible linear light that allows for beam control in wall washing and grazing distributions for limitless design scenarios. Fully encased and rated for outdoor use, Senik Flex RGBW is a perfect option for creating colorful facades when installation space is limited, and flexibility is a must.

- 4-in-1 RGBW LED's with 3000K warm white
- Lumen output ranging up to 290Lm per foot
- 30° beam pattern
- Cuttable every 12" with 33ft max run (Factory assembled)
- Measures only 22mm (0.86") wide by 9.5mm (0.37") tall
- Features fully encased IP67 rating suitable for outdoor use
- Dimmable (5-100%) with most DMX controls
- cULus Listed for indoor and outdoor use
- 50,000 hours rated life



PROJECT: _____

TYPE: _____

LOCATION: _____

CATALOG NUMBER: _____



SENIK FLEX RGBW QUICK SPECS

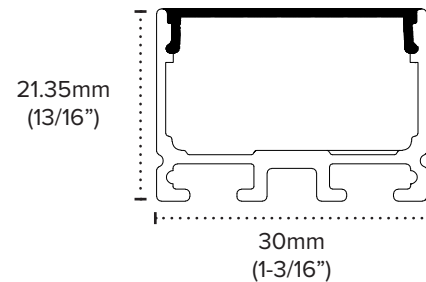
VOLTAGE	24V DC
WATTAGE	5.8W / ft
LUMENS	Up to 290Lm / ft
CCT OPTIONS	RGBW (3000K)
CRI	N/A
MAX RUN	33ft
CUTTING POINTS	12" (Factory Assembly Required - Not Field Cuttable)
IP RATING	IP67 - Encased
DIMMING	DMX (5-100%)
DIMENSIONS	0.86" (22mm) W x 0.37" (9.5mm) H
BEAM ANGLE	30°
OPERATING TEMP	5°C (41°F) to 70°C (158°F)
OPERATING TEMP	-20°C (-4°F) to 40°C (104°F)
AMBIENT TEMP	-30°C (-22°F) to 70°C (158°F)
RATED LIFE	50,000 Hours

SENIK FLEX RGBW IP RATINGS

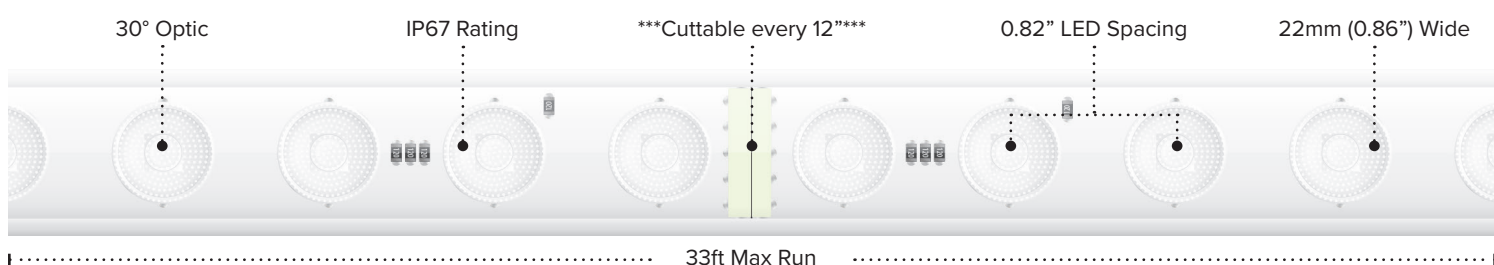


IP67 (Encased)
Fully encased tape light in silicone injected jacketing that allows for wet location applications.
Best suited: Indoor & Outdoor wet locations

SENIK FLEX SERIES CHANNEL DIMENSIONS



SENIK FLEX RGBW QUICK LOOK



SENIK FLEX RGBW ORDERING INFORMATION

Custom Cut Orders - Please Allow Up To 2-4 Weeks Order Processing & Delivery

ITEM NUMBER	VOLTAGE	CCT	LENGTH	OPTICS	LUMENS / FT	WATTAGE / FT	IP RATING	CRI	CUTTING	MAX RUN
SFLEX-R30-24V-RGBW-CC	24V DC	RGBW	Custom Cut	30°	290Lm / ft	5.8W / ft	IP67	N/A	*** 12" ***	33ft
SFLEX-A30X50-24V-RGBW-CC	24V DC	RGBW	Custom Cut	30°x50°	300Lm / ft	5.8W / ft	IP67	N/A	*** 12" ***	33ft

Custom Cuts: Specify desired length according to cut increment. Order (1) Power Conkkit and (1) End Cap per length of Senik Flex Custom Cut plus assembly fee (PZM-SFLEX-CC-ASSEMBLY)

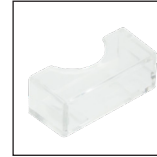
Custom Cut Assembly Fee: Each custom cut assembly fee (SFLEX-CC-ASSEMBLY) includes UV cure adhesion of conkkit and end cap plus light-up test

SENIK FLEX RGBW ACCESSORIES

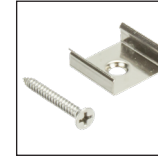
ITEM NUMBER	DESCRIPTION
SFLEX-CONKIT-5PIN	3ft Power connection bare wire (for custom cut)
SFLEX-RGBW-END	End cap (for custom cut)
SFLEX-RGBW-CLIPS	Surface Mount Clips (Qty 10)
SFLEX-RGBW-CHAN-4	4ft Aluminum Channel w/lens
SFLEX-RGBW-CHAN-FEED	Aluminum Channel Feed Cap
SFLEX-RGBW-CHAN-END	Aluminum Channel End Cap
SFLEX-RGBW-CHAN-CLIP	Channel Mounting Clips (Qty 10)
SFLEX-SW-CHAN-CLIPADJ	Adjustable Mounting Channel Bracket
SFLEX-CHAN-180-CON	180° Inline Connectors for SFLEX Channel



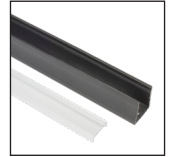
SFLEX-CONKIT-5PIN



SFLEX-RGBW-END



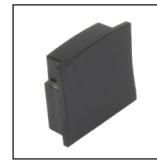
SFLEX-RGBW-CLIPS



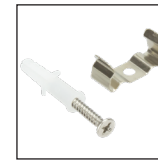
SFLEX-RGBW-CHAN-4



SFLEX-RGBW-CHAN-FEED



SFLEX-RGBW-CHAN-END



SFLEX-RGBW-CHAN-CLIP

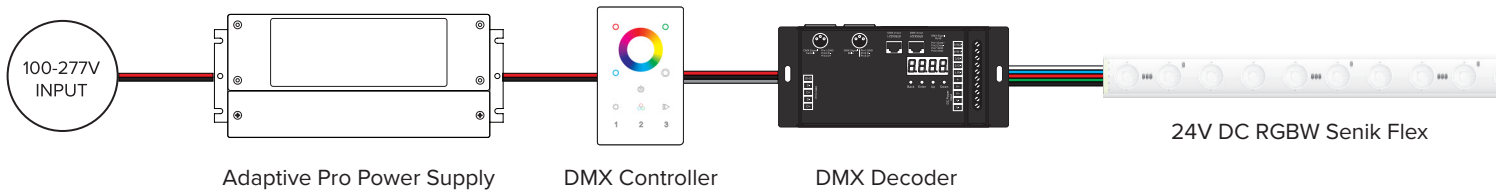


SFLEX-SW-CHAN-CLIPADJ



SFLEX-CHAN-180

SENIK FLEX RGBW QUICK SET UP



RECOMMENDED POWER SUPPLIES

ITEM NUMBER	DESCRIPTION	MAX / MIN LOAD	INPUT VOLTAGE	OUTPUT VOLTAGE	DIMMABLE	DIMENSIONS
ADPTPRO-DRJ-30-24	Adaptive Pro Series 30W	30W / 3W	100-277V AC	24V	Yes*	6.49"L x 3.6"W x 1.02"H
ADPTPRO-DRJ-60-24	Adaptive Pro Series 60W	60W / 6W	100-277V AC	24V	Yes*	7.44"L x 3.7"W x 1.73"H
ADPTPRO-DRJ-96-24	Adaptive Pro Series 96W	96W / 9.6W	100-277V AC	24V	Yes*	8.70"L x 3.7"W x 1.73"H
ADPTPRO-DRJ-192-24	Adaptive Pro Series 192W (2 x 96W)	192W / 19.2W	100-277V AC	24V	Yes*	10.94"L x 4.3"W x 1.88"H
ADPTPRO-DRJ-288-24	Adaptive Series 288W (3 x 96W)	288W / 28.8W	100-277V AC	24V	Yes*	11.92"L x 4.3"W x 1.88"H
ADPTPRO-DR-200-24	Adaptive Series 200W - Class P	200W / 20W	100-277V AC	24V	Yes*	10.07"L x 3.07"W x 1.85"H
ADPTPRO-DR-300-24	Adaptive Series 300W - Class P	300W / 30W	100-277V AC	24V	Yes*	10.86"L x 3.07"W x 1.85"H

*5-in-1 Dimming Capable: Phase (ELV/MLV/TRIAC) / 0-10V / 1-10V / 10V PWM / Potentiometer *



AMERICAN LIGHTING WARRANTY

LIMITED WARRANTY FOR LED PRODUCTS: 5 YEARS

LIMITED PRODUCT WARRANTY

Our products are warranted to be free from defects in material and workmanship for the warranty period listed. Warranty periods begin from the date of shipment from American Lighting Inc's warehouse to the original purchaser. Products that prove to be defective during their specific warranty period will be either repaired or replaced, at the sole discretion of American Lighting Inc. Claims for defective products must be submitted in writing to American Lighting Inc's RGA Department within the warranty period. Upon approval of such return, American Lighting Inc reserves the right to inspect the product for misuse or abuse. Claims for indirect or consequential damages or for product that, in American Lighting Inc's opinion, has been misused will be denied. This is a warranty of product reliability only and not a warranty of merchantability or fitness for a particular purpose. American Lighting Inc shall have no liability whatsoever in any event for payment of incidental or consequential damages, including, without limitations, installation costs and/or damages for personal injury and/or property. These products may represent a possible shock or fire hazard if improperly installed or altered in any way. This warranty does not apply to any product that has not been properly installed in accordance with current local codes and/or the National Electrical Code. Products that require a transformer, driver, or power supply must be used in conjunction with American Lighting Inc's recommended power supply to ensure safety and retain product warranty.

PRODUCT SPECIFICATIONS

For the latest product information, updates, instructions and details concerning specifications, colors, finishes, performance, installation and design, visit www.americanlighting.com. Color may vary from the color printed herein due to limitations in photographic and printing processes. American Lighting Inc. reserves the right to change product specifications without notice. Other product specifications such as color temperature, wavelength characteristics and lumen output are subject to production limitations and may vary. LED technology is changing rapidly, and not all color temperatures and performance levels can be duplicated at a later time. Best practices include purchasing 10-15% more for a particular project on the same initial order where white LED color temperatures must be maintained over project and product life. Eventual product replacement should be considered at layout and design stages. Best practices also include testing connections and product performance prior to mounting and/or installing.

AVERAGE LIFE

Average incandescent lamp life, rated life and average life are terms used to describe the number of hours at which half of the lamps have failed. For LEDs, the hours of rated life specify the point where 70% of original lumen output is reached. Below this point, the effective life is over, however, the LED may still emit light. Individual results may vary with actual environmental conditions including, but not limited to, proper installation, ambient temperature and/or input voltage fluctuations.